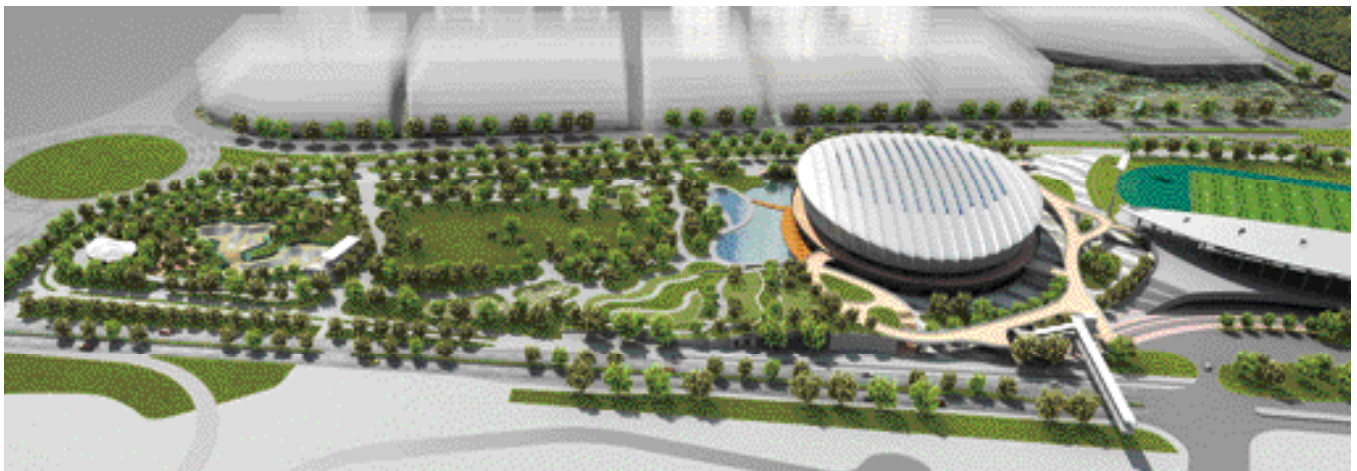
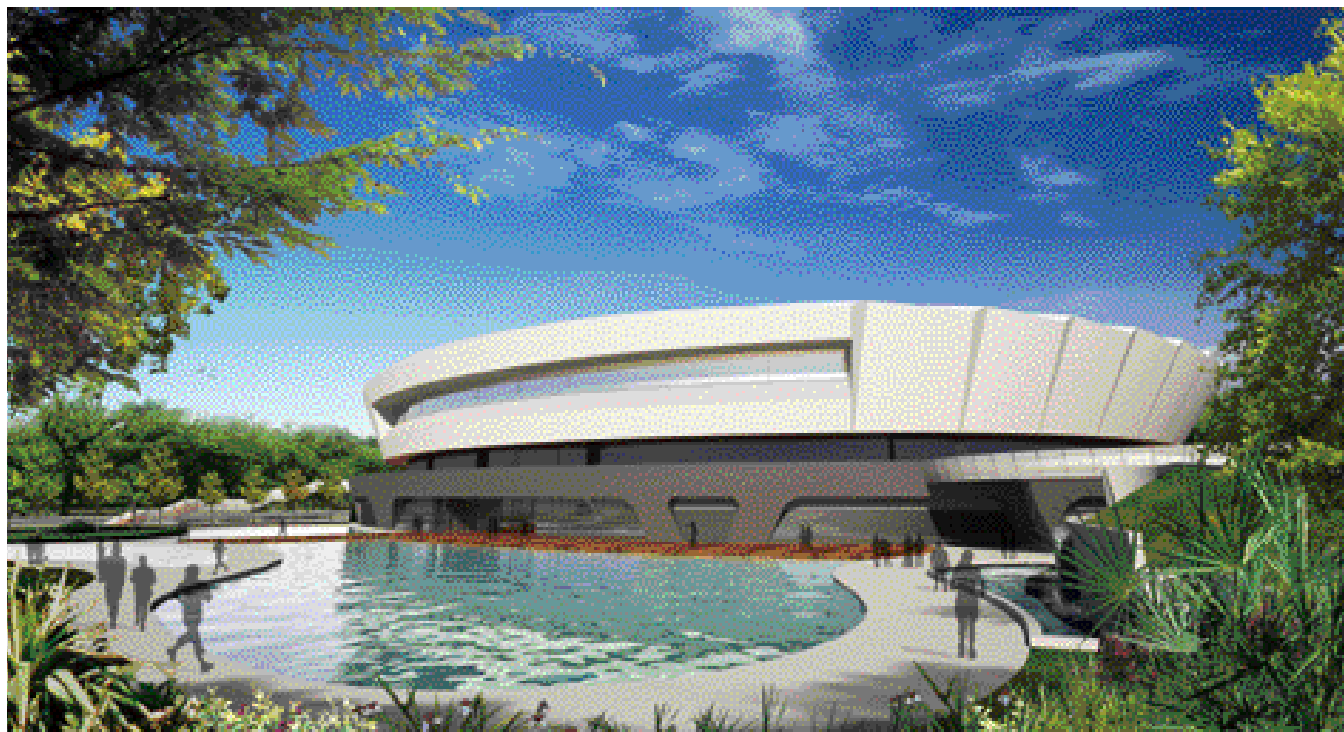




## Town Park, Indoor Velodrome-cum-Sports Centre

Area 45, Tseung Kwan O





**A**djoining the existing Tseung Kwan O Sports Ground, the Indoor Velodrome-cum-Sports Centre will provide an international standard training base for cyclists and cycling competition venue. In addition, the project will provide local amenities to the Tseung Kwan O residents.

The project also includes a town park, which comprises an artificial lake, landscaped terrace, central lawn, elderly corner, children's play area, amphitheatre and a skateboard park.

#### **Design concept**

The design concept of the master planning is to coherently integrate the velodrome building with the existing Tseung Kwan O Sports Ground and the future town park both functionally and aesthetically. Elevated pedestrian walkways are designed to provide functional separation between the visitors of the velodrome and the park users. A cascading landscape deck rises from the parkland and physically connects with the velodrome and existing footbridge and lift at Po Hong Road. The elliptical form and ribbed roof of the velodrome building are inspired by the profile of a bicycle helmet. The curvilinear shape helps to reduce the mass of the building from whichever angle you look and successfully blends into the organically shaped parkland.

#### **Function**

The sports centre and ancillary functions are located at ground floor, while the arena and cycle track are located at first floor. For the cycle track design, detailed coordination has been carried out between the architect, velodrome specialist and the Hong Kong Cycling Association to meet not only Union Cyclist International (UCI) Category 1 standard but also the needs of local cyclists. To fully utilize the facilities, the arena is capable of accommodating different ball courts at the field while cyclists are training at the track. Other multi-purpose events such as exhibitions or school events can also be held at the field.

#### **Sustainable features**

The roof is integrated with both photovoltaic and solar panels to generate renewable energy and act as a heat source for the hot water supply system. The heating, ventilating and air-conditioning system has been designed to reduce overall energy consumption. For example, high efficiency motors are used for the plumbing equipment; variable air volume system is adopted to reduce air-conditioning energy; AHU system is equipped with energy recovery wheels so as to pre-cool/warm the fresh air and occupancy sensors for HVAC and lighting system are used in appropriate areas.



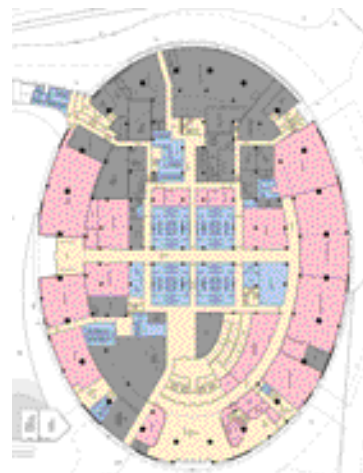
client department  
**Leisure and Cultural Services Department, HKSAR Government**

architects  
**Architectural Services Department, HKSAR Government  
P&T Architects and Engineers Ltd**

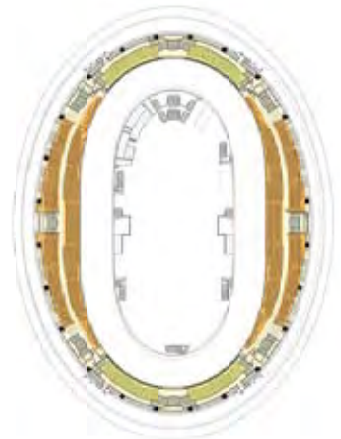
structural engineer  
**Ove Arup & Partners HK Ltd**

building services engineer  
**WSP Hong Kong Ltd**

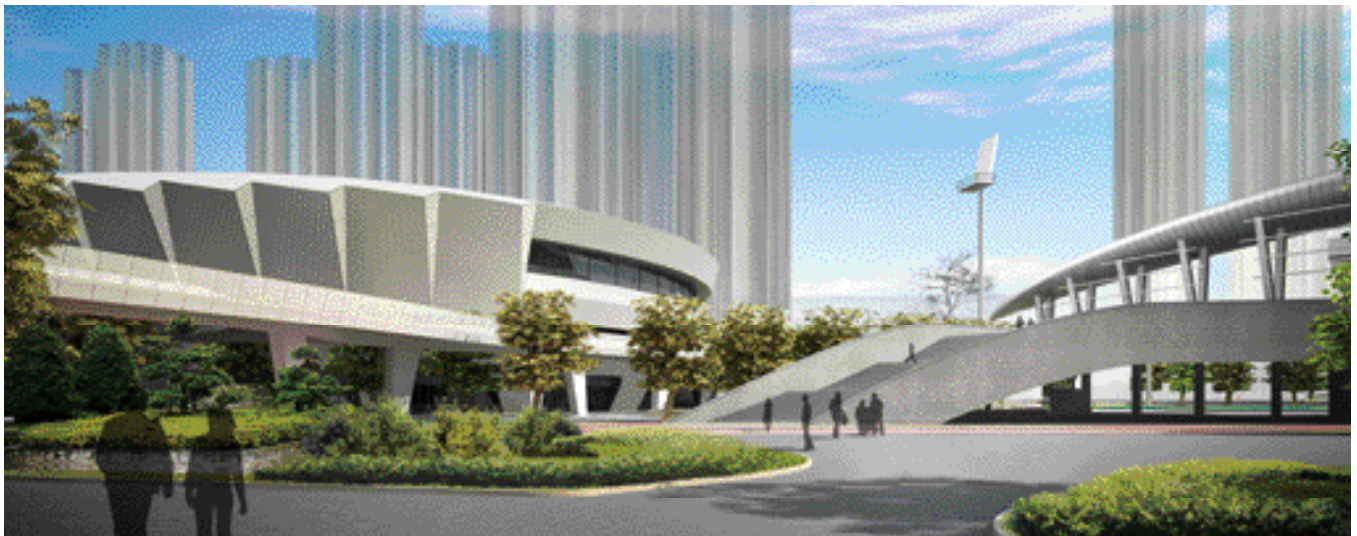
main contractor  
**Shui On Construction Company Limited**

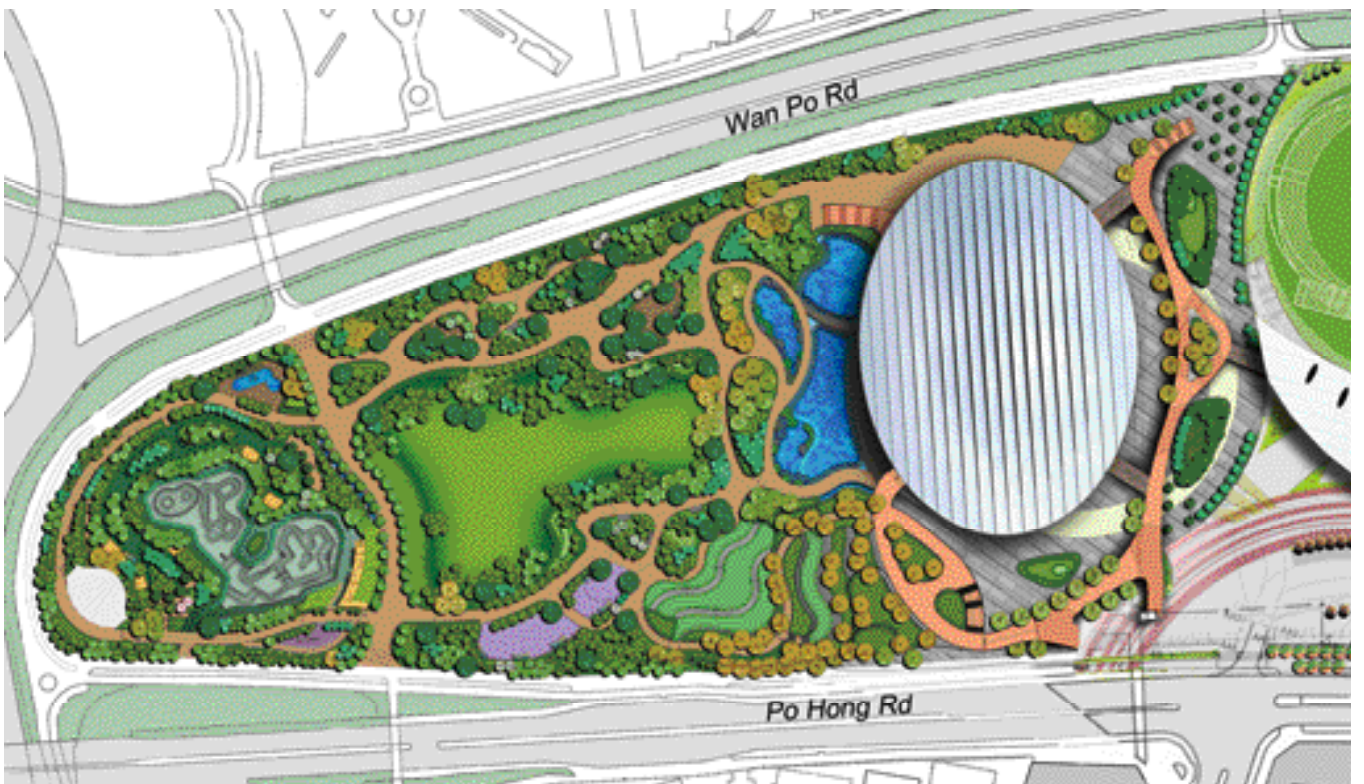
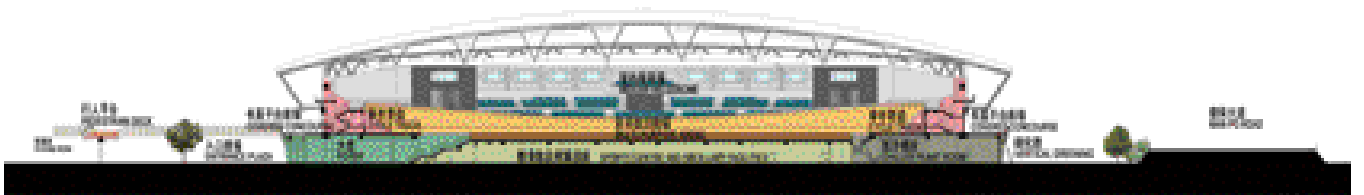
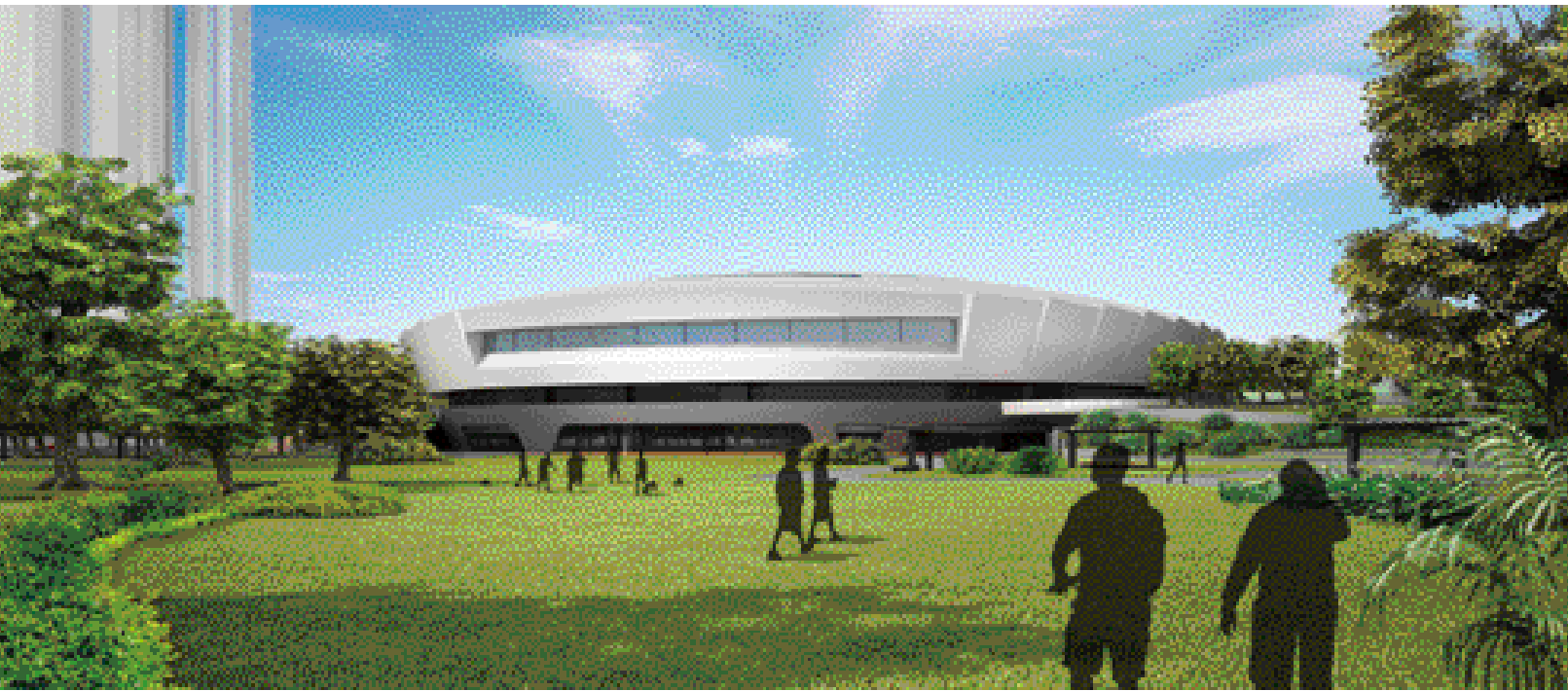


**G/F floor plan**



**2/F floor plan**





Master layout plan



# Air Handling Unit



We are proud to supply AHUs in HKSAR Projects



HKSAR Government Headquarters at Tamar Development



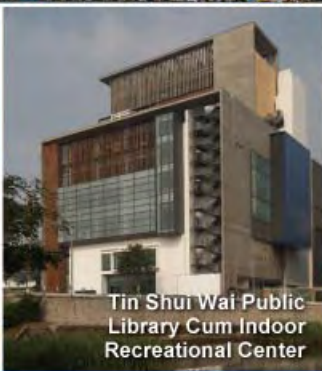
Town Park, Indoor Velodrome-cum-Sports Centre



Siu Sai Wan Complex



City Hall Annex



Tin Shui Wai Public Library Cum Indoor Recreational Center



New Civil Aviation Department Headquarters



## 偉基空調有限公司 WELCOME AIR-TECH LTD.

Unit B300, 3/FI., Block B, Sea View Estate,  
No. 2-8 Watson Road, North Point, Hong Kong.  
Tel: (852) 2806 8316 Fax: (852) 2806 2426  
E-mail: sales@saiver-welaire.com.hk  
Website: www.saiver-welaire.com.hk



Integrated AHU  
FCU, CRAC & Chiller



Oil Free Chiller

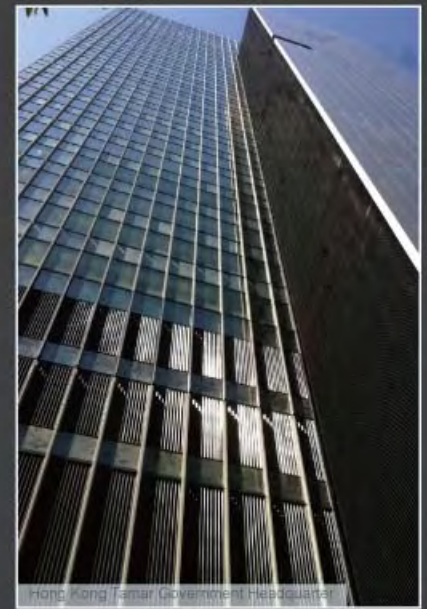


Ventilating Fan & Filter



FSV / FS MULTI

# Specialist in Smoke / Natural Ventilation / Solar Control / Weatherproof Louvres



**FAS Engineering Limited (FAS)** is a Hong Kong based company specialized in supply, design and application engineering works which offers ventilation, smoke control and solar control solutions to clients in the building and construction aspects. We are the sole distributor of "Colt International" which has over 75 years experiences in research, design & manufacture of smoke ventilation and associated equipments.

**Colt Group** is an ISO9001 standard registered firm with worldwide experience and substantial track records in Hong Kong, China & Asia, for smoke ventilation design and manufacture of associated equipments. With 20 years local experience in the field of smoke ventilation, FAS is capable of providing application engineering with technical support by Colt to satisfy the customers' needs and requirements of authority.



**FAS Engineering Limited**  
Unit 607-8, 6/F, Block B, Hoi Luen Industrial Centre,  
55 Hoi Yuen Road, Kwun Tong, Kowloon.  
Tel : 2107 4888 Fax : 2107 4555  
Email : marketing@fas-hk.com Website : www.fas-hk.com





**VALBRUNA ITALY**

**STAINLESS STEEL**

REVAL® 不銹鋼螺紋鋼



角鋼



六角鋼



方鋼



圓鋼



扁鋼

**華寶不銹鋼亞洲有限公司**

(意大利華寶鋼廠附屬公司)

香港中環皇后大道中74號皇后中心15樓1501室

電話: +852 2854 1199

深圳辦: +86 755-8222 6465

傳真: +852 2854 1177

www.valbruna.org

電郵: sales@valbruna.org

www.valbruna-stainless-steel.com

**Rasonic 樂信牌**

噴射式乾手機



RBD-JJ70A

## 智能噴射式兩面出風，乾手速度特快

全新樂信牌乾手機，風力強勁，特有噴射式兩面出風，乾手速度更快。配備微電腦智能控制及紅外線感應開關，使用時不需接觸任何按鈕，潔淨衛生。



手伸入乾手槽，液晶顯示屏點亮



屏幕顯示噴射式出風

18

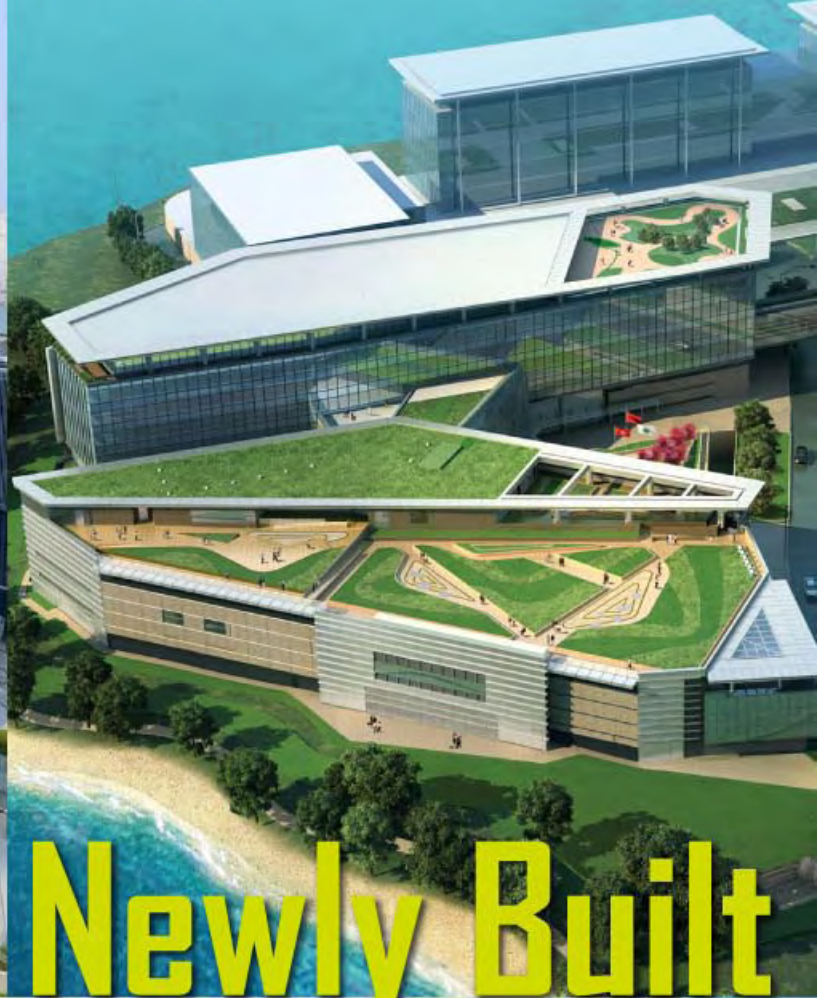
預設18秒乾手時間，節省能源



**HKSAR Government Headquarters at Tamar**  
**Coating System for Exterior Wall :**  
**Ceraskaken**



**New Civil Aviation Department Headquarters**  
**Coating System for Carpark Floor :**  
**Arkifloor ENG**



**Newly Built**

SKK in Japan, Hong Kong, Shanghai & Singapore  
have been awarded

**ISO 9001 : 2008**  
**ISO 14001 : 2004**



# Government Projects

10/F, Dah Sing Financial Centre, 108 Gloucester Road, Wanchai, HK.  
T : 2529 3968 F : 2527 0299 W : [www.skkhk.com.hk](http://www.skkhk.com.hk) E : [enquiries@skkhk.com.hk](mailto:enquiries@skkhk.com.hk)



# 30%\* off your building's energy bill is just the beginning

Imagine what we could do for the rest of your enterprise

Managing complex building environments while meeting your energy efficiency targets is no small task. Our EcoStruxure™ energy management architecture achieves this elegantly through intelligent integration of building systems on a single IP platform.

## The savings go far beyond buildings

Today, only EcoStruxure energy management architecture by Schneider Electric™ delivers up to 30% energy savings, uniting energy-intensive systems like HVAC, access control, video security management, and lighting control across your entire enterprise. Saving up to 30% of a building's energy is a great beginning, and thanks to EcoStruxure energy management architecture, the savings don't have to end there.



Learn about saving energy from the experts!

Download this white paper, a HKD 1500 value for FREE!

Visit [www.SEreply.com](http://www.SEreply.com) Key Code 48247f

Customer Care Centre 2579 9699

## EcoStruxure™

Active Energy Management  
Architecture from Power Plant to Plug™



### Data centres

From the rack to the row to the room to the building, energy use and availability of these interconnected environments are closely monitored and adjusted in real time.



### Buildings

Intelligent integration of security, power, lighting, electrical distribution, fire safety, HVAC, IT, and telecommunications across the enterprise allows for reduced training, operating, maintenance, and energy costs.



### Industrial plant

Open standard protocols allow for system-wide management of automated processes with minimized downtime, increased throughput, and maximized energy efficiency.

# 30%

Schneider  
Electric™

施耐德電氣



# New Civil Aviation Department Headquarters



## Leading Paint Manufacturer in Asia

**A team of service professionals dedicated to customer satisfaction. We specialize in:**

- Architectural Coatings
- Decorative Coatings
- Industrial Coatings
- Floor Coatings
- Colour Matching & Design
- Industrial Coatings
- Metal Protective Coatings
- Renovation Projects



**NIPPON PAINT (H.K.) CO., LTD.**

Unit 509-515, 5/F, Trade Square, 681 Cheung Sha Wan Road, H.K.

Tel: (852) 2699 9333 Fax: (852) 2602 8844

Email: np@nipponpaint.com.hk Website: www.nipponpaint.com.hk

A MEMBER OF THE NIPSEA GROUP



The honor of Green Awards



Tamar Development



New Civil Aviation Development



Air-cooled Screw Chiller  
& Heat Recovery Chiller



Expansion of Tseung Kwan O Hospital



Siu Sai Wan Complex



Single Screw  
Water Cooled Chillers



Tin Shui Wai Public Library cum  
Indoor Recreational Centre



EN Certified  
Air Handling Unit



HEXAGON  
Inverter Chiller



Oil Free  
Water-cooled Chiller



Dual Compressor  
Centrifugal Chiller



Water Cooled  
Centrifugal Chiller

# Congratulations to ArchSD 25<sup>th</sup> Anniversary



Cross District Community Culture Centre in Lower Ngau Tau Kok Estate

ICAC Headquarters Building

Hong Ning Road Government Quarters

Kai Tak Cruise Terminal



HK SZ Western Corridor Co-location of Boundary-Crossing Facilities



28A Sports Centre, Fanling, Sheung Shui



Tin Shui Wai Area 101 Sports Center



The Tamar Project



Cheung Sha Wan Government Office



Hong Kong Science Museum



Joint User Complex and Wholesales Fish Market at Tuen Mun



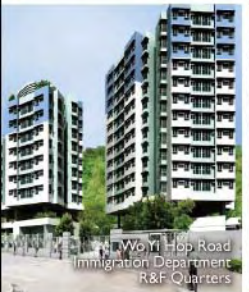
**J. ROGER PRESTON LIMITED**  
 澧信工程顧問有限公司  
 MECHANICAL AND ELECTRICAL CONSULTING ENGINEERS

*Growing with Hong Kong*

JRP will be celebrating  
**50<sup>th</sup>** Anniversary  
 in 2012

JRP, a leading M&E Consultancy group in the Asia Pacific region. With over 49 years of practicing experience, we take pride in the diverse portfolio of prestigious projects we have completed.

JRP is committed to contributing our expertise and experience for improving the built environment. We aggressively take part in sustainable engineering design, responding to the increasing demand of Green buildings within the region.



Wo Yi Hop Road Immigration Department R&F Quarters



North Point Government Offices

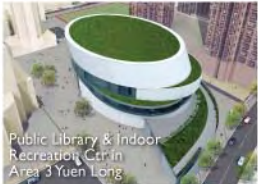


Tsing Yi Complex

The Hong Kong Cultural Centre



Area 18, Tung Chung Open Space



Public Library & Indoor Recreation Ctr in Area 3 Yuen Long



Pak Kau College



SKH St. Andrews Primary School



North Lantau Hospital, Phase I



Lai King Government Quarters



Caritas Lok Kan School



SKH St. Mary Church College

T (852) 2590 9333 F (852) 2590 9897

E Info@jrp-group.com W www.jrp-group.com

Level 11, Tower 1 Millennium City 1, 388 Kwun Tong Road, Kowloon, Hong Kong



# IVE Engineering

Your Partner in Professional Development

## Professional Development Courses on Building Development and Design

Buildings Ordinance and its Administration Procedures	15 hrs
Building Planning Regulations and Development Control	15 hrs
Application of Sustainable Building Design (SBD) Guidelines	12 hrs
Fire Safety for Building Planning	12 hrs
Fire Service Regulations and Requirements	7 hrs
Introduction to Fire Safety Engineering	7 hrs
Site Design, Building Design, Construction Details and Documentation	18 hrs
Barrier Free Access Design for Buildings	9 hrs
Introductory Workshop on Building Information Modelling (BIM)	6 hrs

Get more information

<https://EDIT.vtc.edu.hk>  
EDIT@vtc.edu.hk  
2435 9423

Member of  VTC Group

[EDIT.vtc.edu.hk](https://EDIT.vtc.edu.hk)

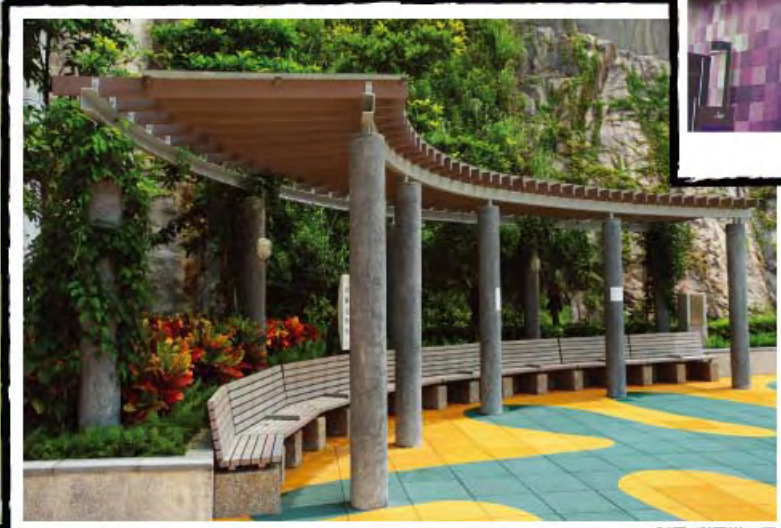


金門·協興 添馬艦新政府總部  
**Central Government Complex, Tamar**



太古地產 北京三里屯工程  
**Sanlitun Village, Beijing**

**Recent Completed Recycle Plastic-wood Projects** 近期完成之著名環保木工程



新昌 彩雲道工程  
**Choi Wan Road**

**hingswood**<sup>®</sup>  
recycle ecology wood

Living a sustainable life



瑞安 東離五期工程  
**Eastern Harbour Crossing Site Phase 5**



瑞安 葵聯路工程  
**Kwai Luen Road**

more than 300 local & China job references  
in the past 5 years  
(過往5年, 中港實質工程已超過300個)





**GOVERNMENT OFFICE & COMMERCIAL**



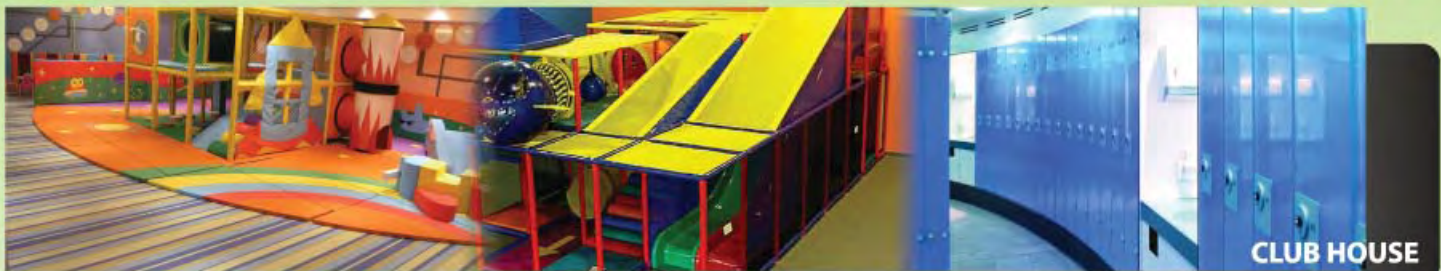
**SPORTS CENTRE & SWIMMING POOL**



**HOSPITAL & CLINICS**



**PUBLIC FACILITIES**



**CLUB HOUSE**



**SPORTS & RECREATION**

# GENESIS

T (852) 2503 1868  
 F (852) 2503 1768  
 E [info@genesisdev.com.hk](mailto:info@genesisdev.com.hk)  
 Unit B, 2/F., Mackenny Centre, 660 Castle Peak Road,  
 Lai Chi Kok, Kowloon, Hong Kong.



# Performance Drywall & Ceiling Systems



## Recent projects reference:

- New Civil Aviation Department Headquarters
- City of Dreams, Macau
- North Mall, Ph 1, Podium, Venetian Macau
- Wynn Casino & Resort Ph 1, Macau
- One Island East, Quarry Bay
- Prince of Wales Hospital Extension Block, Shatin
- Science Park Ph 3, Shatin
- Mandarin Oriental Hotel, Landmark
- Disneyland, Hong Kong
- AIG Tower, Central
- Pacific Place Ph 3, Queensway
- West Rail Siu Hong & Tuen Mun Station



Rm. 702-5, Yen Sheng Centre, 64 Hoi Yuen Road,  
Kwun Tong, Kowloon, Hong Kong.

Tel: (852) 2811 5253

Email: [cemachk@cemachk.com](mailto:cemachk@cemachk.com)

Fax: (852) 2516 5115

<http://cemac.com.cn>



# Italian Made FLAVIKER Tile Producer PI.SA

Marmi Preziosi Series Made by our leading digital technology – Ink Jet System, it can transform the taste of natural marble onto our normal products and special 3 D surface.



Please download our catalogue at [www.flavikerpisa.it](http://www.flavikerpisa.it)



[WWW.BUONAIDEA.COM.HK](http://WWW.BUONAIDEA.COM.HK)

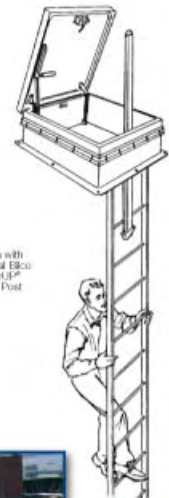
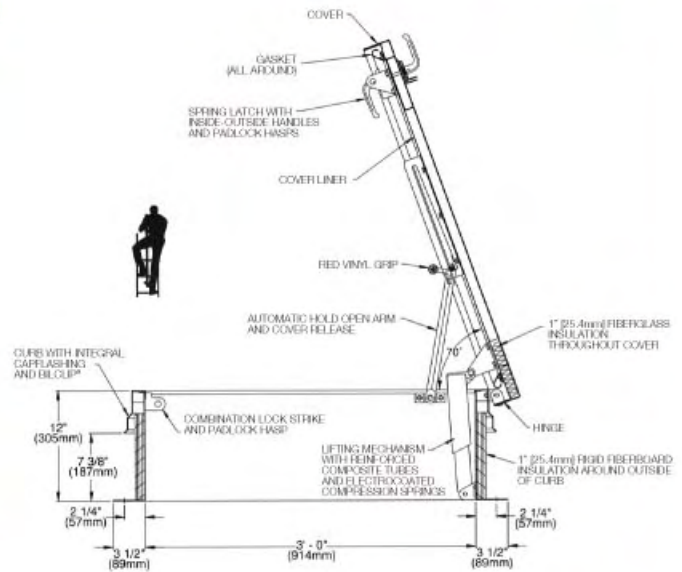
美意建材(國際)有限公司 Buona Idea Building Materials (Int'l) Limited

香港九龍觀塘開源道55號開聯工業大廈B座606室

Room 606, Block B, Hoi Luen Ind. Centre, 55 Hoi Yuen Road, Kwun Tong, Kowloon, Hong Kong SAR

電話 Tel: (852) 2543 4243 傳真 Fax: (852) 2543 0408 電郵 E-mail: [buonaid@netvigator.com](mailto:buonaid@netvigator.com)

# Bilco Roof Hatch



## Description:

The easy one-hand operation to the fully open or closed position provides the user the security of having one hand firmly on the ladder at all times. Available in galvanized steel, aluminum, or stainless steel construction.

## Specifications:

### Material

Steel: Cover and frame are 14 gauge (1.9mm) G-90 paint bond galvanized steel

### Cover

Breakformed, hollow-metal design with 1" (25.4mm) concealed fiberglass insulation, 3" (76mm) beaded, overlapping flange, fully welded at corners, and internally reinforced for 40 psf (195 kg/m<sup>2</sup>) live load

### Curb

12" (305mm) in height with integral capflashing, 1" (25.4mm) fiberboard insulation, fully welded at corners, and 3-1/2" (89mm) mounting flange with 7/16" holes (11mm) provided for securing frame to the roof deck

### Gasket

Extruded EPDM rubber gasket permanently adhered to cover

### Hinges

Heavy-duty pintle hinges with 3/8" (9.5mm) Type 316 stainless steel hinge pins

### Latch

Slam latch with interior and exterior turn handles and padlock hasps

### Lift Assistance

Compression spring operators enclosed in telescopic tubes. Automatic hold-open arm with grip handle release

### Finish

Steel: Alkyd base red oxide primer

### Hardware

Steel: Engineered composite compression spring tubes. Steel compression springs with electrocoated acrylic finish. All other hardware is zinc plated/chromate sealed



Project: The Hong Kong Polytechnic University 香港理工大學  
Model: SS-90 Stainless Steel Roof Hatch

Hong Kong Sales Distributor

**Power Creation Engineering Ltd.**

展力工程有限公司

9/F, Sui On Industrial Bldg., 134 Wai Yip Street, Kwun Tong, Kln.

T 852-2304-4300 F 852-2304-4700

E alex@powercreation.com.hk

W www.powercreation.com.hk

Macau Sales Distributor

**Ho Hing Eng. Co. Ltd.**

豪興工程有限公司

Edif. Jardim Hoi Wan, 6 Andar, A06, Rua BAIA No. 55, Taipa, Macau

T 853-2885-7525 F 853-2884-8243

Mobile phone 853-6655-1260 E hohing@macau.ctm.net

"If it can be built, we can build it."

*Charles Chau, Intelligent Building Systems Specialist  
Gary Wong, Engineering Equipment Specialist*



## Your building just got smarter

The widespread adoption of intelligent technologies for buildings means one thing to us: transformation. From the day we opened our doors 35 years ago, we have been at the forefront of synergising how engineering and technology can transform the way we live. Whether it's residential or industrial, commercial or public, we work hard to deliver smart engineering solutions for truly intelligent buildings.

**ESTABLISHED IN HONG KONG AND  
MOVING HONG KONG FOR  
OVER 30 YEARS**

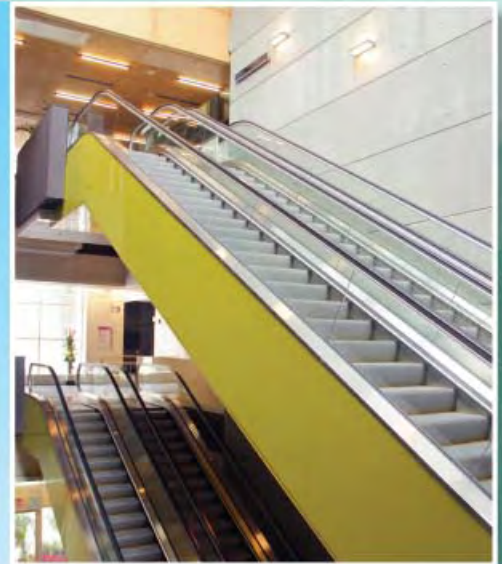
**ANLEV**

ANLEV ELEX ELEVATOR LTD  
安力電梯有限公司

A member of the Analogue Group of Companies

## We supplied Sai Kung Tseung Kwan O Government Complex with:

- 3 units of machine-room-less passenger elevator at 1000kg
- 3 units of passenger elevator from 1000kg to 2500kg
- 4 units of escalator from 5M to 6.5M rise



ANLEV, a member of the Analogue Group of Companies, specialises in the manufacture, sales, installation, service, modernisation and repair of all forms of vertical / horizontal transportation systems.

**ATAL**  
We commit. We perform. We deliver.

13/F, Island Place Tower, No. 510 King's Road, North Point, Hong Kong

Tel : (852) 2561 8278

Fax : (852) 2565 7638

Email : info@anlev.com.hk

Website : www.anlev.com.hk



**BARRISOL**

Stretch your imagination with Barrisol ...



Eurasia Architectural Products Limited

Room B, 6/F, Chinawall Centre, 414-424 Jaffe Road, Wanchai, Hong Kong

Tel : (852) 2793 9966 Fax : (852) 2793 9965

email : hongkong@eurasia-ap.com.hk Website : www.eurasia-ap.com.hk