

The Bloomsville

Kowloon Tong



Located at 51 Nga Tsin Wai Road, The Bloomsville is a single-tower residential project developed by WingTai Asia. The 30-storey building contains 72 units ranging in size between 955 sq ft and 1,078 sq ft, plus an additional two 2,860 sq ft duplexes. Special features of the three-bedroom typical units in the development include ceiling heights of three metres and windows extending down to floor level.

Clubhouse facilities include an indoor swimming pool, an outdoor swimming pool, a Jacuzzi, a gymnasium, a sauna room, a children's play area, a golf putting green, a barbecue area, landscaped gardens and a tricycle path. 78 parking spaces are provided including five motorcycle bays.





陶源 九龍塘

位 於衙前圍道 51 號的陶源是由永泰亞洲發展的單幢式住宅項目。30 層高的住宅大廈包括 72 個為分層單位，面積約為 955 至 1,078 平方呎；另外兩個為複式單位，面積每個為 2,860 平方呎。三房兩廳的間格設計，連主人套房，間隔長方四正，樓底高 3 米，

配以落地玻璃，更富空間感。

會所設施包括室內恆溫泳池、室外泳池、室外水力按摩浴池、健身室、桑拿浴室、兒童遊樂場、燒烤場、室外高爾夫球推桿場、園藝花園及兒童單車徑。項目共有 78 個車位，其中 5 個為電單車位。





33rd floor plan



32nd floor plan



13th to 31st floor plan

Kitchens

- Washer/dryers — Smeg or equivalent (typical units)
— Siemens or equivalent (duplex units)
- Refrigerators — Smeg or equivalent (typical units)
— Gaggenau or equivalent (duplex units)
- Countertops — Surell or equivalent
- Sink mixers — Surell or equivalent (typical units)
- Cooking hoods — Italgas or equivalent (typical units)
— Gaggenau or equivalent (duplex units)
- Microwaves — Smeg or equivalent (typical units)
— Gaggenau or equivalent (duplex units)

Bathrooms

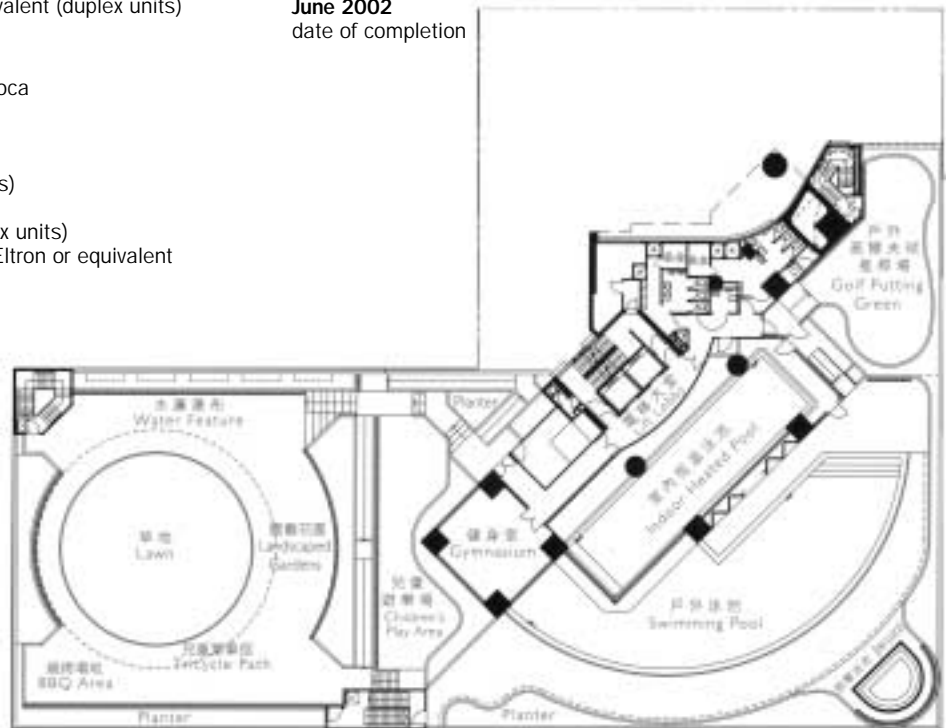
- Sanitary ware — Bellavista and Roca
- Wash basins — Kerasan
- Bath tubs — Duker (duplex units)
- Mixers — Kludi (typical units)
— Dornbracht (duplex units)
- Shower sets — New Team
— Dornbracht (duplex units)
- Electric water heaters — Stiebel Eltron or equivalent

WingTai Asia
developer

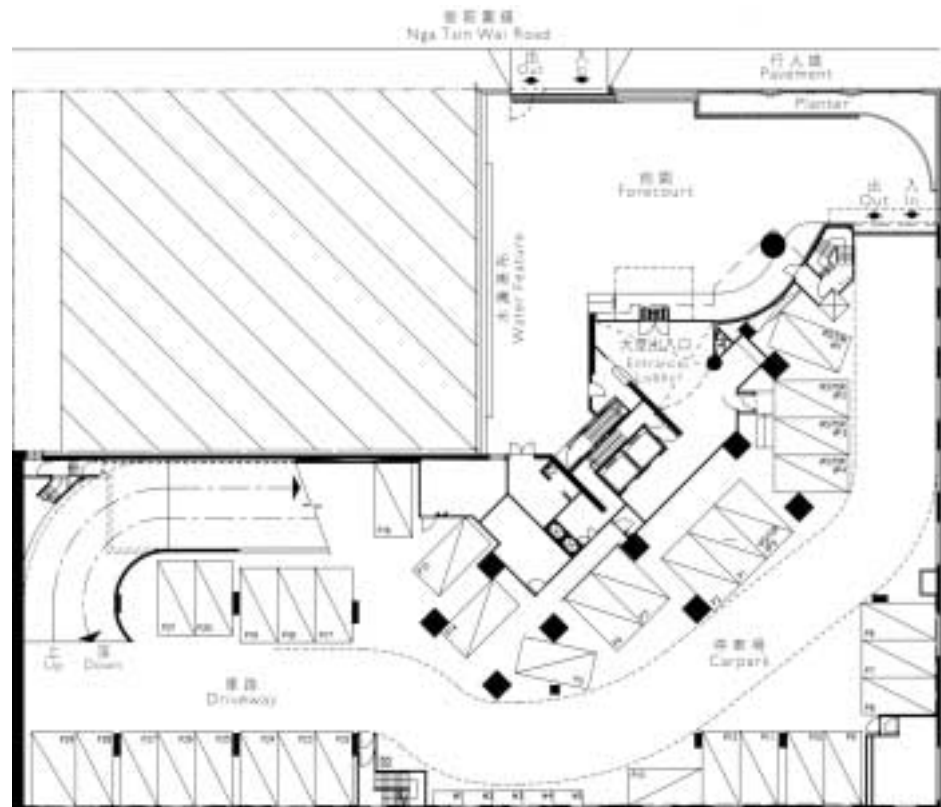
CYS Associates (HK) Limited
architect

Hein Lee Engineering Co Limited
main contractor

June 2002
date of completion



second floor plan



ground floor plan