

Project name **City University of Hong Kong Adjunct Campus**

Location **Kowloon Bay, Hong Kong**

Publication **Building Journal** May 2003

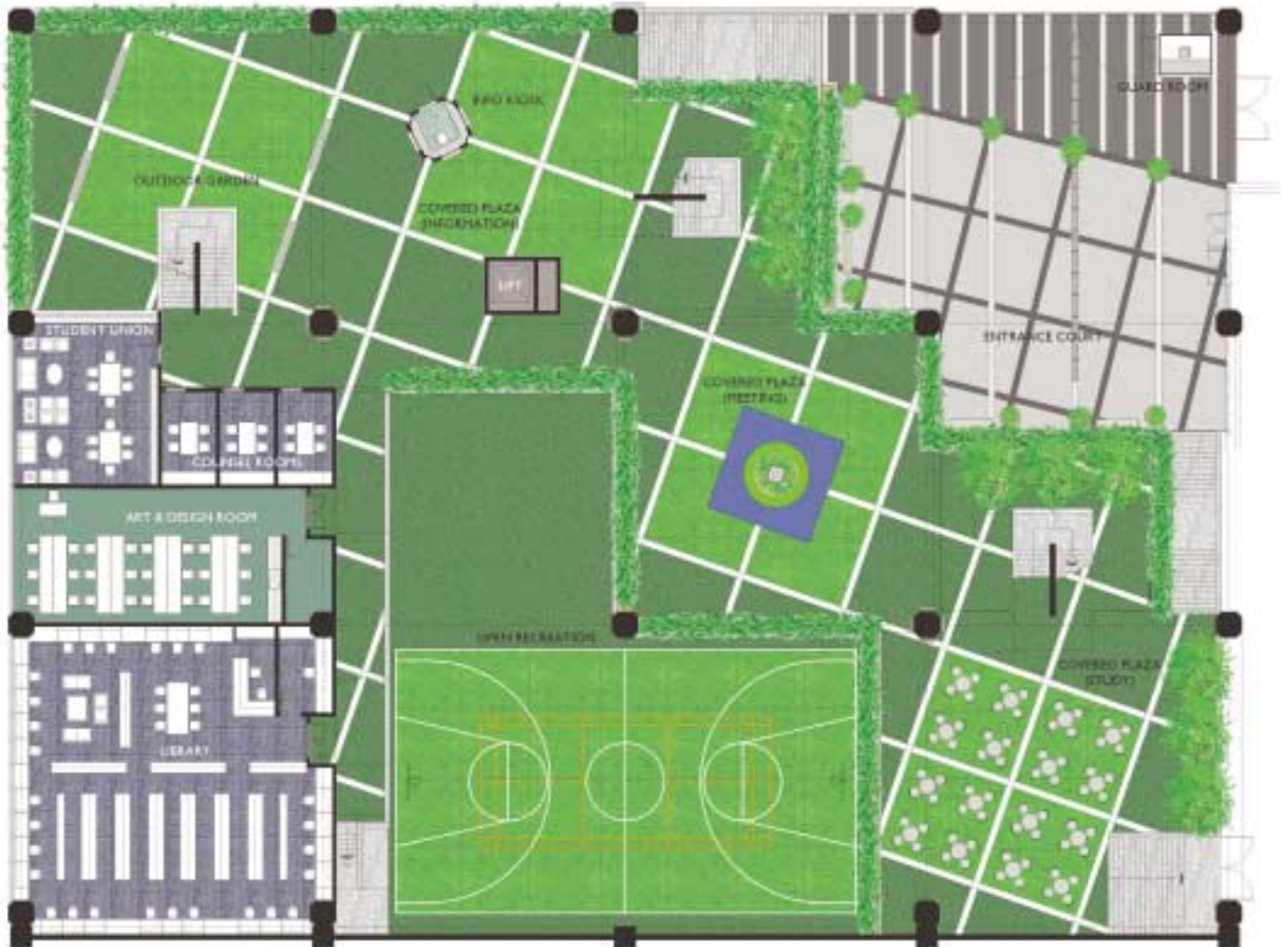
City University of Hong Kong Adjunct Campus, Kowloon Bay

Rejuvenated campus

by Tim Youngs

When City University of Hong Kong (CityU) decided to build a new adjunct campus for its associate degree and continuing education programmes, it sought to renovate an existing structure rather than build from scratch. Despite a short timeframe and limited budget, the design by Nelson Chen Architects achieves a strong sense of place which was also environmentally conscious in its execution.





The project saw extensive renovation of an abandoned secondary school, formerly Wellington College near Telford Gardens in Kowloon Bay, into an adjunct campus. The existing academic blocks on the site ranged in height between two and six storeys high and offered 5,000 sq m of enclosed space. Another 3,000 sq m of covered outdoor space was also used for improvement works.

The original school layout had four classroom blocks arranged above a two-storey podium housing other facilities and it was precisely because of this modular layout that CityU chose this building for renovations. (In fact, the reinforced concrete structure and exposed waffle ceiling slab are highly reminiscent of the CityU main campus buildings at Kowloon Tong.) Nelson Chen retained this arrangement in his renovation design, which retained up to four storeys of teaching blocks accommodating tutorial and lecture rooms above a refitted podium. The lower two levels now house

administrative and teaching rooms requiring more public access, such as teachers' offices, computer rooms, the student union area, meeting rooms, a library and a 200-seat lecture hall. The largest room on the campus — a student hall for up to 400 seats — is also located here.

Construction of the first phase completed in August to September 2001, followed by construction of the second phase from March to August 2002.

Reorganisation

Nelson Chen was asked by CityU to prepare for the renovation of both the external and internal areas. From the outset, the architect's approach to the project was to present a hi-tech look in keeping with the technology programmes of the university. The challenge was how to makeover what was essentially a very standard school block. Initial plans pointed to a need to reglaze the windows, add sunshading features and refit the roof with planters, among other measures.





Also under the original design, the designers proposed lustre wall tiles arranged in a clearly defined grid. Time and cost considerations led to changes in materials, however, and textured spray paint was later applied instead of tiles to the exterior while retaining the grid and line detailing. Soft pastel colours are used for the four classroom wings — primary colours and the like would have looked too youthful for this project.

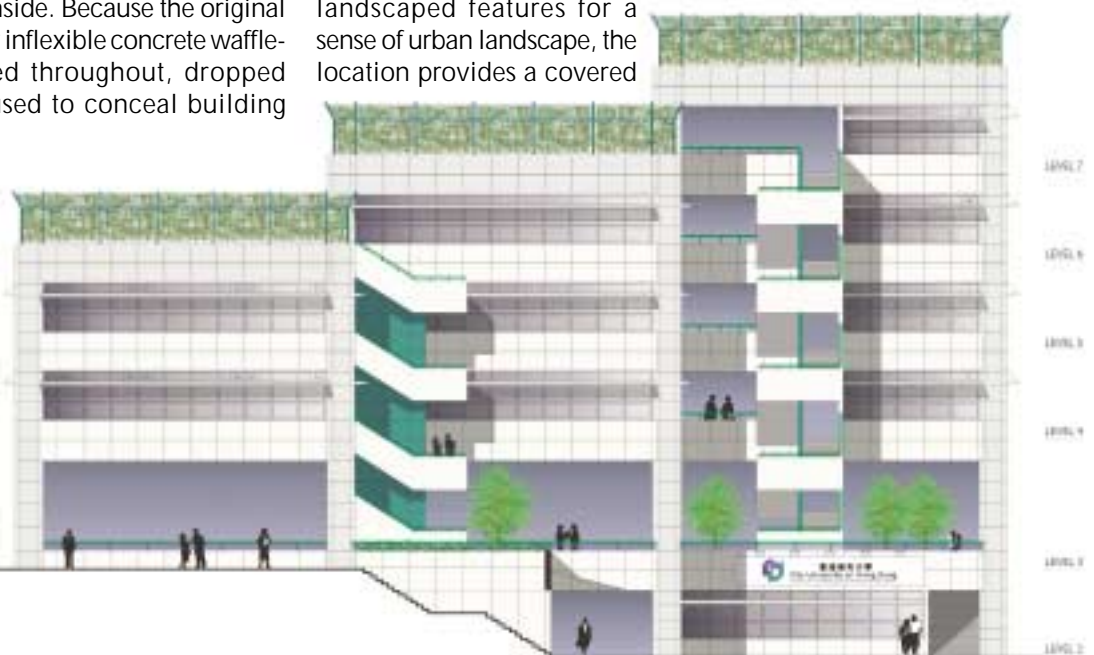
At the classrooms, window spaces were enlarged in accordance with the larger rooms and the new frames plus metal sunshades were put into place. New building services including air-conditioning, lighting and fire provisions were meanwhile installed inside. Because the original building had extremely inflexible concrete waffle-slab ceilings installed throughout, dropped ceiling plates were used to conceal building

services in the project.

The main lecture hall, once a dark and unappealing student hall, has been upgraded with an improved ceiling treatment and lit arcade features along the walls. The concept of recycling was extended in the hall with original school furnishings including desks and chairs retained in the upgraded surrounds.

Outdoor space

The school's covered main plaza space was comprehensively revamped to include modules such as a cafe area, a meeting area and an information area. Featuring green colours and landscaped features for a sense of urban landscape, the location provides a covered





garden environment to escape heat and shelter from bad weather.

Though plans for this space were at one point challenged by envisioned budget cuts, the architect launched appeals to retain the proposed feature. According to Nelson Chen, both designer and client must recognise that an educational institution is more than the sum of its classrooms. "A lot of learning takes place outside the classroom," said Mr Chen, adding that this is especially the case for part-time students who arrive after work and take evening classes. "We thought if it's a really successful environment people would want to spend time here."


As a result, students can now arrive at the college early to meet with friends, recap on missed lectures or just grab a coffee. "There's not enough of this in Hong Kong because space is at a premium. But if you don't have it, you don't





really have a campus. You would just have a collection of classrooms.”

While generally a large horizontal space, the covered plaza features a planter design that adds a vertical element. With a mock clock tower and canopy, the planter has become a symbolic gathering point.

Elsewhere, at open space towards the main entrance to the school, the architect incorporated angled linework into the ground as a visual consideration. The detail serves as a guide towards the main staircase as well as a providing directional indicators pointing towards CityU’s main Kowloon Tong site — a discrete means to incorporate a shared university identity in an adjunct campus. 



City University of Hong Kong
client

Nelson Chen Architects Ltd
architect, interior designer

Pat Davie Ltd
contractor

Daniel Chan & Associates Ltd
m&e engineer

Canwest Consultants (Int'l) Ltd
structural engineer

Levett & Bailey
quantity surveyor



Polyurethane Flooring System for the City University

Kangnam Polyurethane Flooring System Supplied and Installed by APS Construction (International)



APS Construction Systems (International) Ltd is proud to be the installer of Kangnam's Polyurethane Flooring System for the City University project.

Kangnam Chemical Co Ltd as the market leader of Polyurethane manufacturer in Korea with experience over 30 years, its products are widely used in the following areas:

- All weather Athletic Field & Tracks, Tennis Court, Basketball Court & Sports Playgrounds, 1AAF Certified and being used in the Seoul Olympic Game Stadium at 1988.
- Waterproofing Systems, exposure types & non-exposure types for roof, bathroom, kitchen etc.
- Indoor & Outdoor Seamless Polyurethane Flooring Systems for Shops, Office, Hall, Stadium, Hospital,

- Industrial factory High Hardness Polyurethane Flooring System
- Thin Polyurethane Coating
- Epoxy Coating Systems
- Fast Cured Polyurea Sprayed Coating System
- Sprayed Urethane Foam System
- Joint Sealants

Interested parties, please contact

APS Construction Systems (International) Ltd

Tel : 852-2979-0890

Fax: 852-2979-0499

Email: apsconst@netvigator.com

Address: 12/F Henan Electric Development Building, 389 King's Road, North Point, Hong Kong