



Photo: Cene Au Yeung



Tamar Development

In early 2008, The HKSAR Government awarded Gammon-Hip Hing Joint Venture (G-HH JV) the design-and-build contract of the Tamar Development Project. The contract covers the design and construction of the Central Government Complex (CGC) Office Block, the Legislative Council Complex (LegCo Complex), an open space of not less than two hectares, two covered pedestrian footbridges and other ancillary facilities.



Photo: Gene Au Yeung

The Tamar complex is one of the government's "greenest" complexes. Environmentally friendly and energy-efficient features include double-layer ventilated facades, green roofs, high energy efficiency sea-water cooled chiller plants, rainwater recycling for irrigation purpose, solar electricity panels, service-on-demand escalators, daylight sensor controls and computerized lighting controls. The G-HH JV design also provides a landscaped "green carpet" open space for public enjoyment.

Construction work commenced on the HK\$4.94 billion project commenced in February 2008 and was completed by stages in 2011. Chief Executive Mr Donald Tsang declared the complex officially opened on August 18, 2011.

Design concept

The design concept of the development originates from four main themes of ideas, namely Openness, Enjoyment, Sustainability and Togetherness which form the basis for the orientation of the building and open space for subject site. The metaphor of G-HH JV's design is 'Door always open; Land always green; Sky will be blue; People will be connected'.

Door always open — The design projects the spirit of Hong Kong: an openness and receptiveness to new ideas and diverse cultures. The open door also symbolizes openness and transparency of governance; Land always green — Within the site the architecture is intentionally understated, and lush greenery takes centre-stage; Sky will be

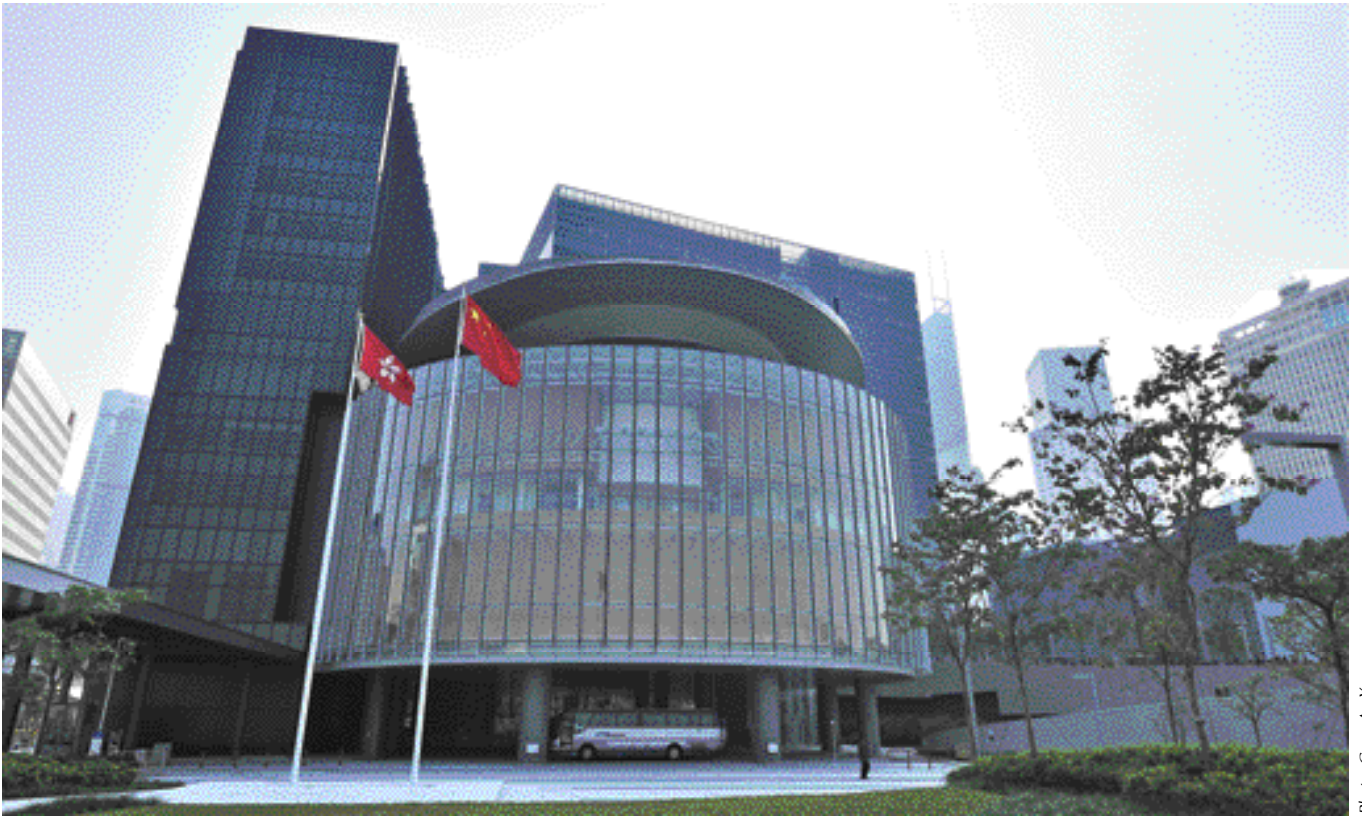


Photo: Gene Au Yeung

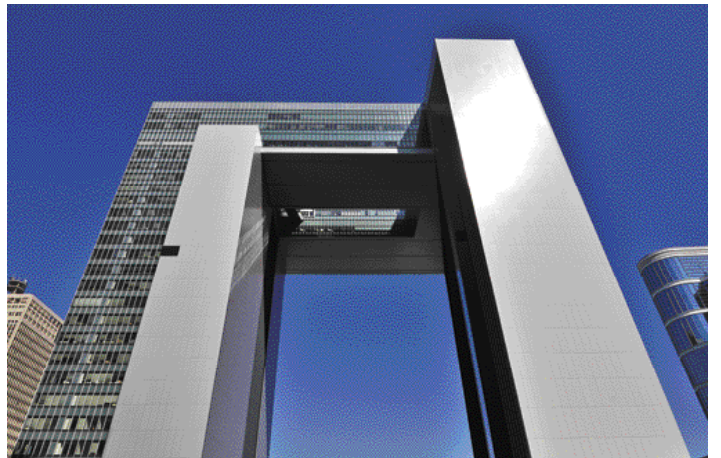


Photo: Gene Au, Yeung

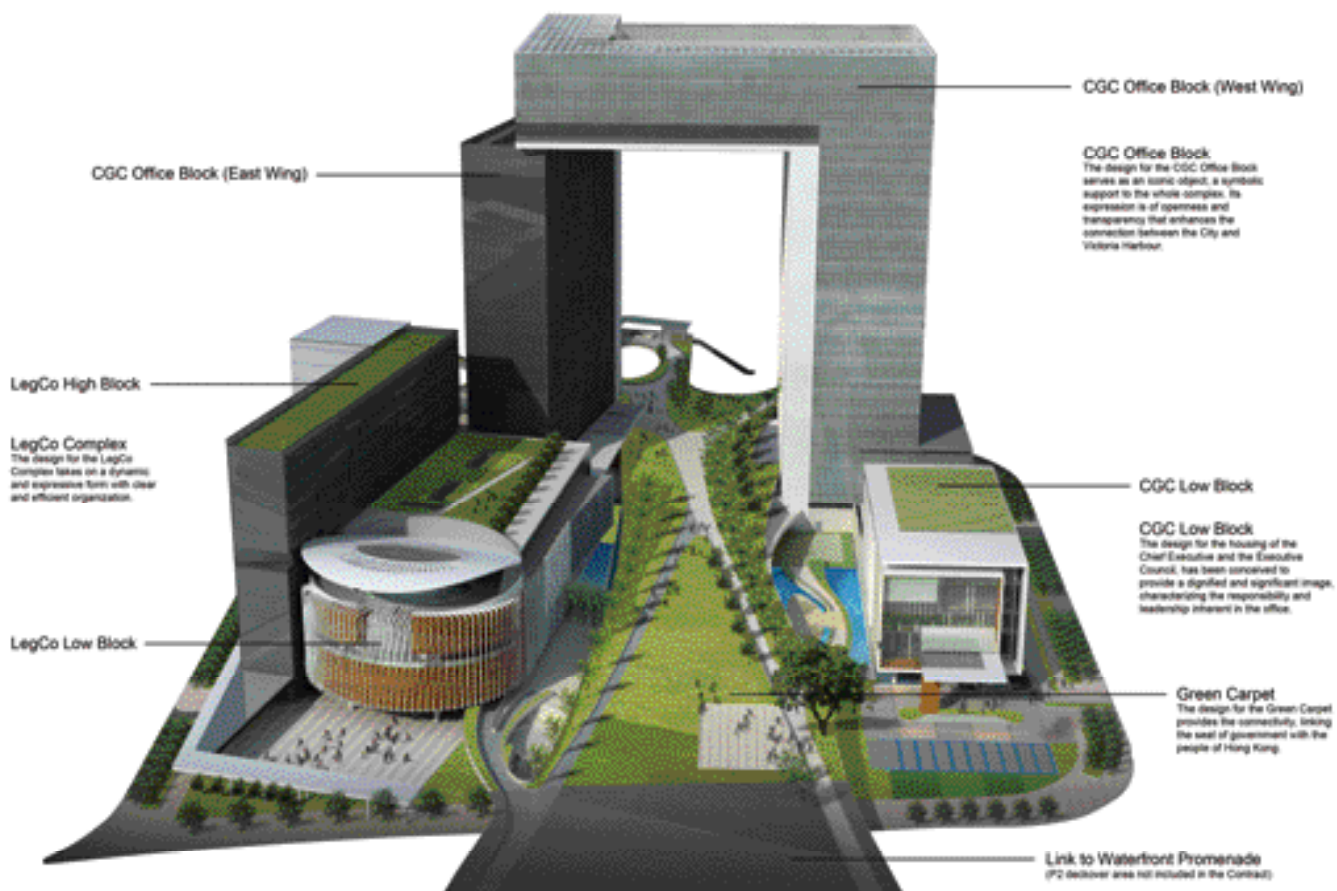




Photo: Gene Au Yeung

blue — Tamar's architecture demonstrates a passionate commitment to sustainable design, contributing to the concerted effort to bring back the blue sky; People will be connected — The essence of Tamar's design is connectivity, both physically in terms of pedestrian movement, and symbolically in terms of dialogue between different parties.

Architectural design

The Tamar development embodies the

CGC, LegCo Complex and Open Space. The CGC comprises the CGC Low Block for accommodating the Chief Executive's Office, the Executive Council (ExCo) and its secretariat, and the CGC Office Block for accommodating the offices of Principal Officials, their bureaux and key staff. The new LegCo Complex will include a LegCo Low Block for accommodating the LegCo Chamber, conference rooms, press rooms and other ancillary facilities, together with





Photo: Gene Au Yeung

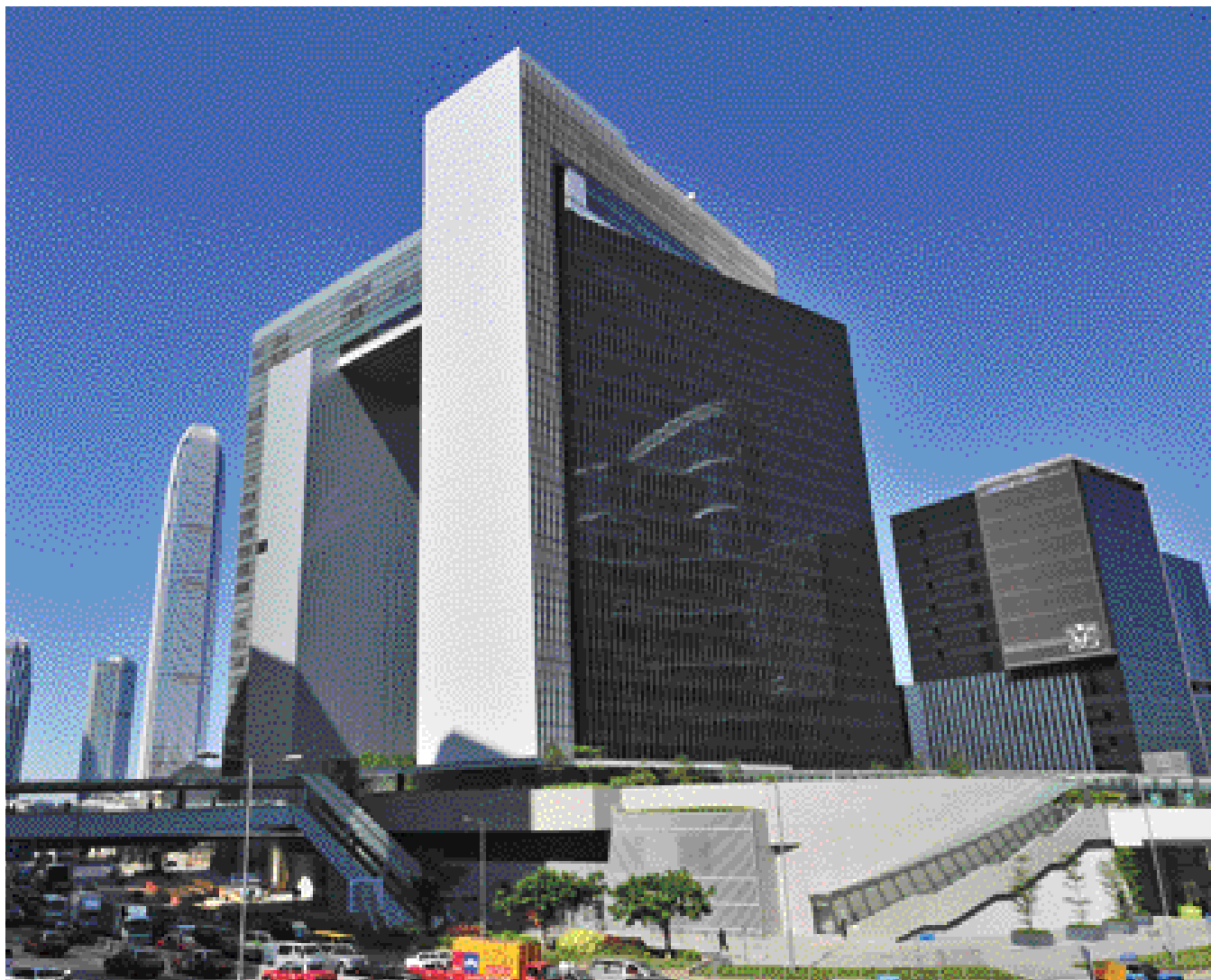


Photo: Gene Au Young

the LegCo High Block for accommodating the LegCo Secretariat, council members, printing room and other ancillary facilities.

Central Government Complex Office Block

The CGC Office Block is situated at the southern edge of the site abutting Harcourt Road. The CGC Office Block consists of three portions, namely the low zone, mid zone and high zone. The low zone (podium) contains main entrance lobbies, conference rooms and concourse for lift lobbies and facilitates the circulation of the public and staff at or near the ground floor. A Multi-Purposes Hall, the entrance foyer of which faces the sea, is located within the podium at the uppermost level below the West Wing of the towers.

The mid zone is then divided into two towers, East and West Wings, and houses the Government Bureaux. The high zone is

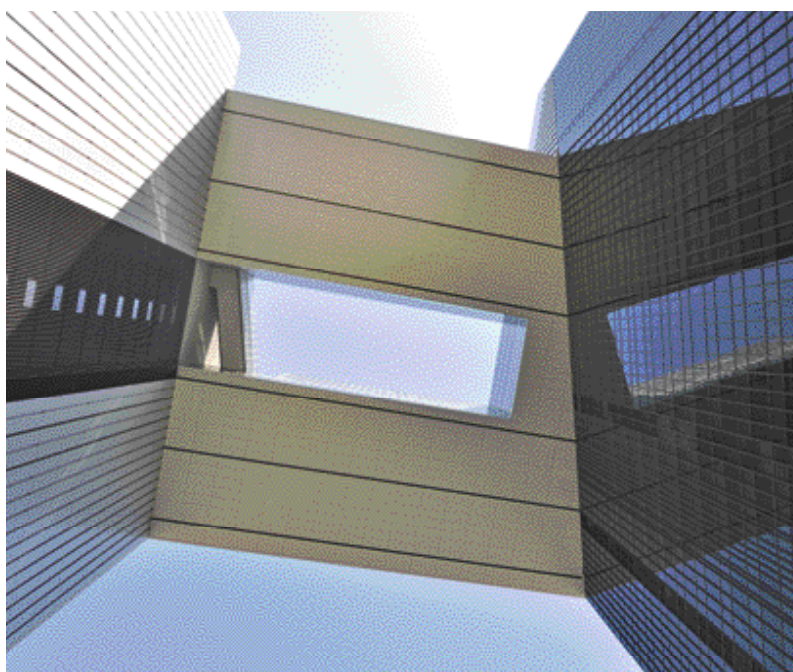




Photo: Gene Au Yeung



a link, bridging the East and West Wings and contains three independent levels of office. The two uppermost levels are reserved for the offices of Chief Secretary and Financial Secretary, and the Central Office.

The CGC Office Block serves as an iconic object, a symbolic support to the whole complex. Its expression is of openness and transparency that enhances the connection between the city and the harbour. The architectural language projects a civic dignity and accentuates the provision of the Civic Place through the centre of the block that allows for the enjoyment and convenience of the public, and as a visual amenity for the city.

Central Government Complex Low Block

The CGC Low Block locates at the western periphery of the site abutting the Tim Wa Avenue. The CGC Low Block contains the ExCo Chamber and an Ante-Chamber.

In a gesture of a balanced and constructive contrast to the LegCo Complex, the CGC Low Block is represented by an unfolding open cube. The visual impression is geometrically simple but the imagery is distinctive, intending to convey a sense of civic dignity, steadfastness and forward vision characterizing responsibility and leadership.

Legislative Council Complex

The LegCo Complex is located at the eastern side of the site abutting the Tim Mei Avenue. The LegCo Complex comprises two blocks, namely the Low Block and the High Block. The Low Block embodies the LegCo Chamber, the Ante-Chamber, the Conference and Press Rooms, the Dining Hall, etc. The LegCo Chamber, in an elliptical form facing the harbour provides a distinctive landmark for the site. The LegCo High Block is primarily an office block housing the LegCo Secretariat staff and the LegCo Members.

The public is able to enter the complex through two entrances either from the formal forecourt on the north to the Low Block or alternatively, to the High Block from a covered area fronting Tim Mei Avenue.

The ground floor of the LegCo Low Block is primarily public in nature. The Public Foyer overlooks the "Green Carpet" and has convenient access via escalators

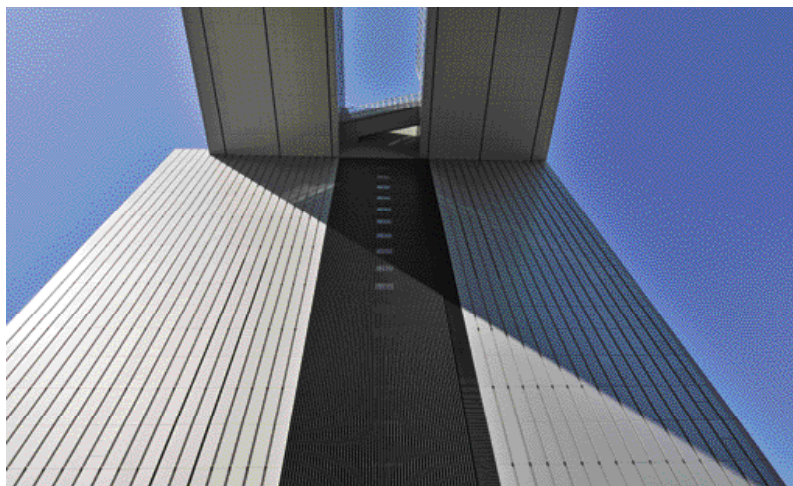


Photo: Gene Au Yeung

and lifts to the gallery levels of the LegCo Chamber. The second floor provides access to the Chamber gallery. The third floor provides the upper level gallery to the Chamber for Education and access to the public gallery Conference rooms.

tenderer

Gammon - Hip Hing Joint Venture

JV participants

Gammon Construction Ltd / Hip Hing Construction Ltd

lead design architect

Rocco Design Ltd

lead structural designer

Meinhardt (C&S) Ltd

lead building services designer

J Rogers Preston Ltd

Fast Facts

total site area	Approx 42,000 sq m
total GFA (whole site)	Approx 129,160 sq m
area of open space	Approx 21,020 sq m
number of blocks	3
CGC Office Block	
number of storeys	27 storeys plus 2 storeys below ground
building height	120 m
GFA	Approx 94,280 sq m
CGC Low Block	
number of storeys	4 storeys plus 1 storey below ground
building height	25.1 m
GFA	Approx 5,420 sq m
LegCo Complex	
number of storeys	10 storeys plus 1 storey below ground
building height	52.3 m
GFA	Approx 29,460 sq m



Ground floor plan

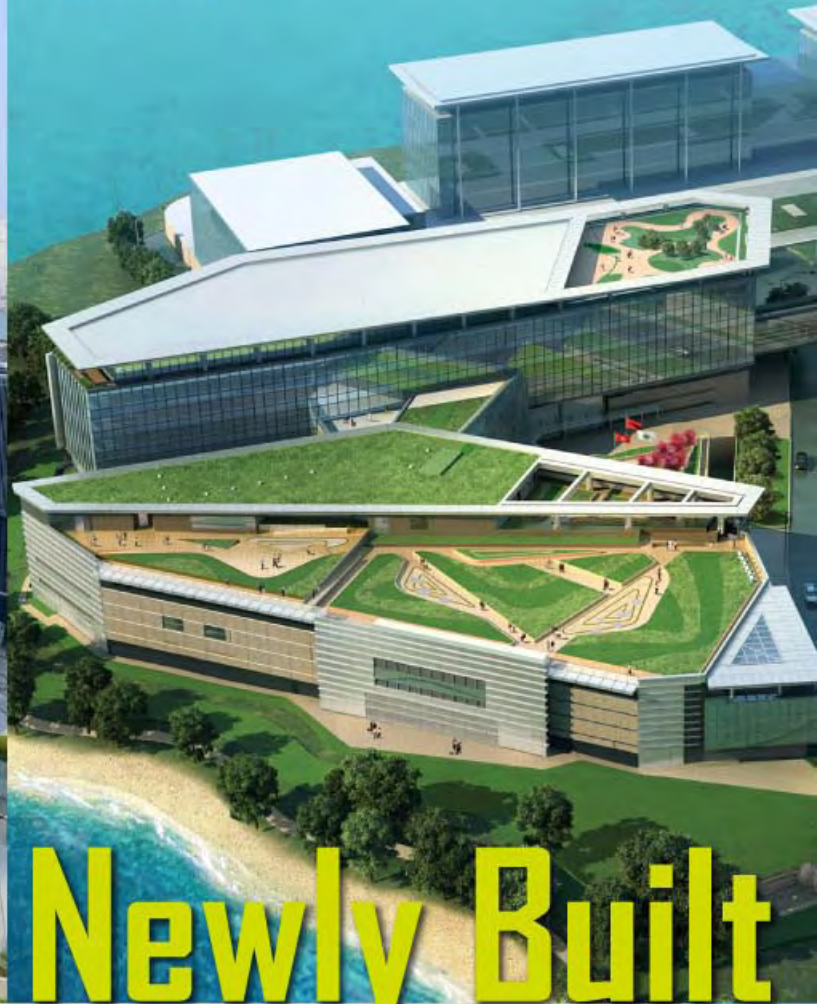


Master layout plan

HKSAR Government Headquarters at Tamar
**Coating System for Exterior Wall :
Ceraskaken**



New Civil Aviation Department Headquarters
**Coating System for Carpark Floor :
Arkifloor ENG**



Newly Built

SKK in Japan, Hong Kong, Shanghai & Singapore
have been awarded

ISO 9001 : 2008
ISO 14001 : 2004



Government Projects

10/F, Dah Sing Financial Centre, 108 Gloucester Road, Wanchai, HK.
T : 2529 3968 F : 2527 0299 W : www.skkhk.com.hk E : enquiries@skkhk.com.hk





Out Reference :
 Tamat Government Headquarter
 Lee Garden
 World Trade Centre
 Tin Shui Wai Clinic
 Chinese University of HK
 Hong Kong Airport
 Hong Kong Jockey Club
 Science Park

360° solution in Cubicle and Locker System 360° solution in Flooring



T (852) 2503 1868
 F (852) 2503 1768
 E info@genesisdev.com.hk
 Unit B, 2/F., Mackenny Centre, 660 Castle Peak Road,
 Lai Chi Kok, Kowloon, Hong Kong.
 www.genesisdev.com.hk

GENESIS

Schafer Cubicle System



SAIVER® Integrated AHU at Tamar Development



Benefits of Integrated AHU

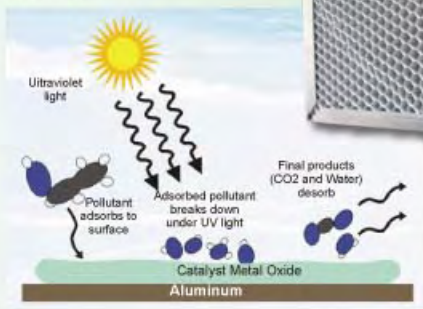
- Reduce on-site fabrication work
- Reduce a lot of wastage & site co-ordination
- High quality control assurance
- Labour time & cost saving
- Environmental friendly



SAIVER® AHU with PCO at Tianjin Polo Club

Photocatalytic Oxidation (PCO)

- Eliminate bacteria & odors effectively
- As high as 97% bacteria killing rate
- Safe to operate
- Easy to maintenance



偉基空調有限公司
WELCOME AIR-TECH LTD.

Unit B300, 3/FI., Block B, Sea View Estate,
No. 2-8 Watson Road, North Point, Hong Kong.
Tel: (852) 2806 8316 Fax: (852) 2806 2426
E-mail: sales@saiver-welaire.com.hk
Website: www.saiver-welaire.com.hk



Integrated AHU
FCU, CRAC & Chiller



Oil Free Chiller

WELAIRE®

Ventilating Fan & Filter

Panasonic

FSV / FS MULTI

HINGS[®]
Quality Assured



金門·協興 添馬艦新政府總部
Central Government Complex, Tamar



太古地產 北京三里屯工程
Sanlitun Village, Beijing

Recent Completed Recycle Plastic-wood Projects 近期完成之著名環保木工程



新昌 彩雲道工程
Choi Wan Road

hingswood[®]
recycle ecology wood

Living a sustainable life



瑞安 東離五期工程
Eastern Harbour Crossing Site Phase 5



瑞安 葵聯路工程
Kwai Luen Road

more than 300 local & China job references
in the past 5 years
(過往5年, 中港實質工程已超過300個)

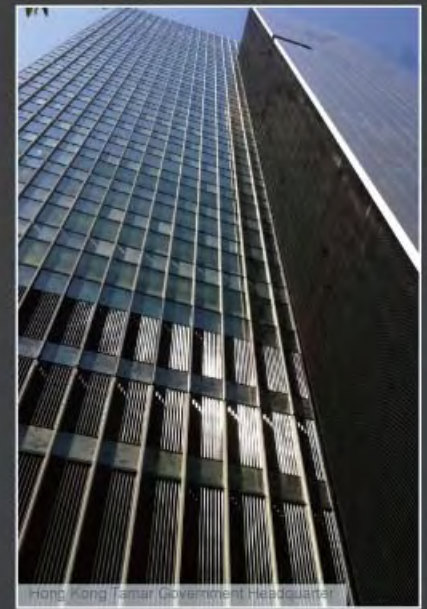


Recycle Plastic-wood Specialist

興業塑膠五金製品廠
HINGS PLASTIC & METAL PRODUCTS MFY.

2/F., Hings Building, 594 Reclamation Street, Mongkok, Kowloon, Hong Kong
Tel: (852) 2669 1939 Fax: (852) 2669 1792 Web Site: www.hings.hk E-mail: hingsmp@hings.hk
Member of The Hings Group of companies
Hings Outlets : Wanchai • Mongkok • Macau • Guangzhou • Shunde • Singapore

Specialist in Smoke / Natural Ventilation / Solar Control / Weatherproof Louvres



FAS Engineering Limited (FAS) is a Hong Kong based company specialized in supply, design and application engineering works which offers ventilation, smoke control and solar control solutions to clients in the building and construction aspects. We are the sole distributor of "Colt International" which has over 75 years experiences in research, design & manufacture of smoke ventilation and associated equipments.

Colt Group is an ISO9001 standard registered firm with worldwide experience and substantial track records in Hong Kong, China & Asia, for smoke ventilation design and manufacture of associated equipments. With 20 years local experience in the field of smoke ventilation, FAS is capable of providing application engineering with technical support by Colt to satisfy the customers' needs and requirements of authority.



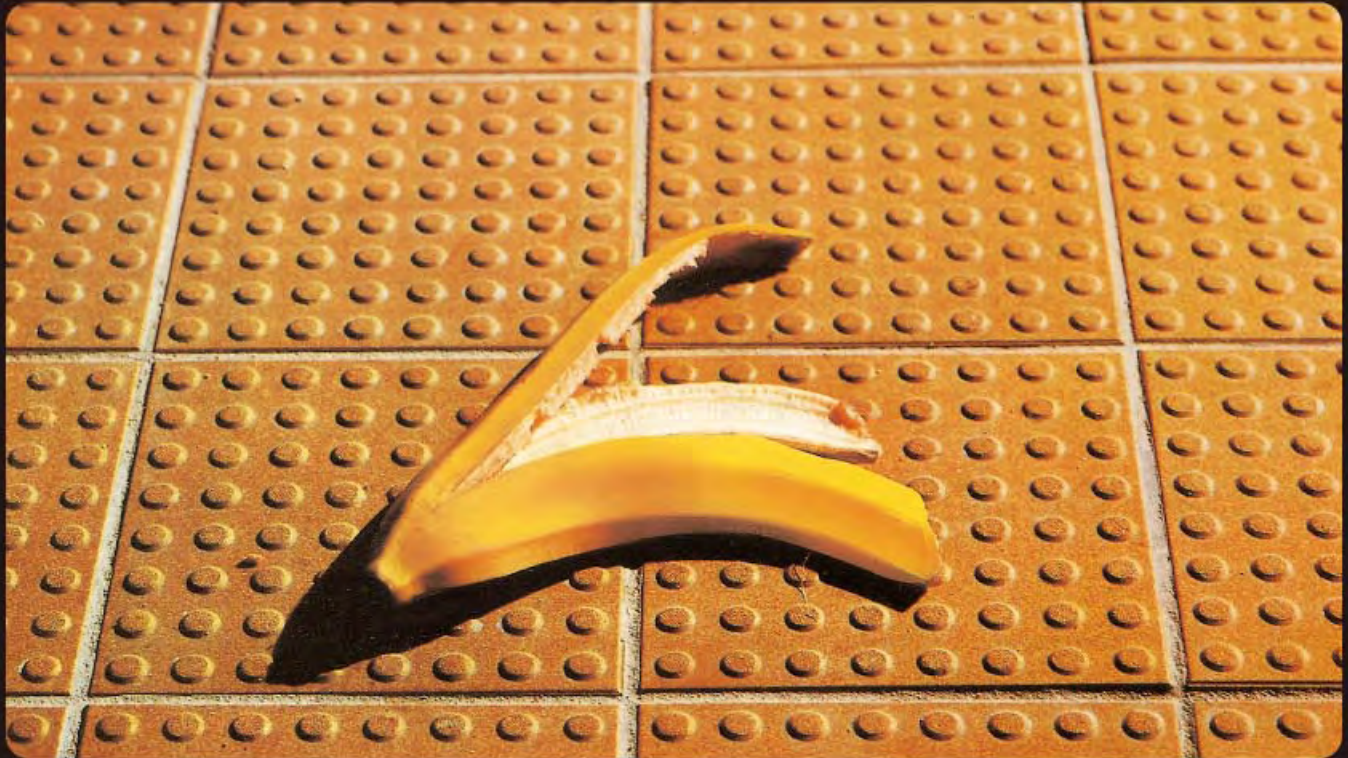
FAS Engineering Limited
Unit 607-8, 6/F, Block B, Hoi Luen Industrial Centre,
55 Hoi Yuen Road, Kwun Tong, Kowloon.
Tel : 2107 4888 Fax : 2107 4555
Email : marketing@fas-hk.com Website : www.fas-hk.com

COLT
Approved Sole Representative

KLINGENBERG

Tiles from Germany

TECHNICA® — UNGLAZED VITRIFIED CERAMIC FLOOR TILES
NO MORE SLIPPERY FLOORS



We are pleased to thank you for the client and professional chosen
the Klingenberg tile for the Tamar Public Art Project



美意建材（國際）有限公司
BUONA IDEA BUILDING MATERIALS (INT'L) LIMITED

香港九龍觀塘開源道55號開聯工業大廈B座606室 Rm 606, Block B, Hoi Luen Ind. Centre, 55 Hoi Yuen Road, Kwun Tong, Kowloon, H.K.
電話 Tel: (852) 2543 4243 傳真 Fax: (852) 2543 0408 電郵 Email: buonaid@netvigator.com

www.buonaidea.com.hk

GREEN HONG KONG – FOR BETTER ENVIRONMENT

Established since 1978,
Pegasus is one of the
earliest established
landscaping companies
in Hong Kong.

Professional services our
company provided to Developers,
the Government of HKSAR,
Contractors include:

- Soft Landscaping works
(planting, hydroseeding,
turfing, greenroof, greenwall
etc.)
- Tree works (Tree Risk
Assessment, tree pruning, tree
transplanting etc.)
- Other works (irrigation system,
wood recycling, tree
consultancy service etc.)



Design and build Irrigation System



*Tree Transplanting and
pruning works*



Greenwall



Greenroof (Tray System)



Tamar Development Project



Landscaping



千里馬綠化有限公司

Pegasus Greenland Ltd.



Unit 818-819, 8/F., New Commerce Centre, 19 On Sum Street, Shatin, N.T.
Tel: (852) 2191 4308 Fax: (852) 2191 4012 Email: info@pegasushk.com