

The Chinese University of Hong Kong

To meet the surging needs for additional space for teaching, learning, research, library and student facilities, five capital projects are currently in active planning and design stage, targeting for completion in 2012.

University Library Extension

It is intended to integrate the library facilities on various floors of the University Library, Tin Ka Ping Building and the new extension into a library complex, with easy accessibility. Instead of building a 10-storey building next to and overshadowing the existing University Library, the extension will merge seamlessly with the existing building and house part of the extended area on the basement floor. Architect for the project is Aedas Ltd.

Centralized General Research Lab Complex (Block 1)

The building is north-south oriented to minimize exposure to the setting sun.

A service and circulation core is located at each end (east and west), with functional spaces at the centre of the building to centralize facilities and minimize access routes. Main entrance to the building is facilitated by access driveway at the east end of the building, closest to pedestrian lifts and main circulation core. Loading bays are located at the west end of the building, closest to the service lift and service core.

The project is designed by Andrew Lee King Fun & Associates Architects Ltd in collaboration with T R Hamzah & Yeang Sdn Bhd.



Centralized General Research Lab Complex (Block 1)

Student Amenity Centre

To provide student amenities at convenient location to accommodate the increased number of students; and to integrate amenities with learning to enable students to gather together and work on interesting projects, engage in musical, arts, extra curricular activities as well as multi-cultural activities.

The cascading building form embeds the overall building in its natural surroundings and provides stepped green roofs to blend in with the site context harmoniously.

The building adopts various forms of energy efficient features, including:

- landscape and vegetation on roof gardens and podium to provide natural evaporative cooling
- solar lightings and photovoltaic system in student plaza and landscaped areas
- cooling tower bleed-off water for flushing
- occupancy and daylight sensors for lighting control
- automatic lighting and ventilation control for lifts

A tree preservation plan and compensation policy has been endorsed by the Campus Landscaping Enhancement Committee. Aedas Ltd is the architect for the project.

Two Integrated Teaching Buildings

To focus on a central, sculptural pedestrian circulation route comprised of stairs and escalators that links the new Cultural Square (close to the railway station) with the Sports Centre and the hostel cluster nearby. The project consists of two podium structures flanking this circulation route, with Building 1 bridging over the beginning of the circulation route and Building 2 placed uphill and parallel to the circulation route.

An iconic piece of architecture, prominently located at the Cultural Square, signifying the start of a journey both internally to the teaching facilities and externally via the circulation route to the mid-level campus.

The design has paid particular attention to reduce the influence on the view of nearby hostel blocks and its compatibility with the surrounding environment.

Three large lecture halls located at the entry level to facilitate circulation.

The circulation route will be visually



Student Amenity Centre

inviting by lifting and lightening the structural elements with visual connections from the lowest to highest points such that it will become an inviting and pleasant pedestrian route as part of campus pedestrianization.

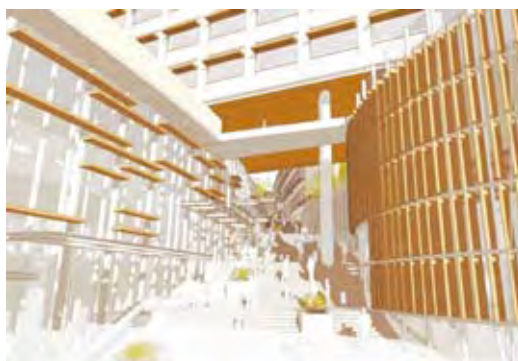
Existing landscape will be enhanced by the extensive roof terraces, located on level 4, intended not only to make the new structures more sustainable, but also to weave the lush landscape from the adjacent hillside into the buildings and anchoring it intimately in its surroundings.

The project is designed by Andrew Lee King Fun & Associates Architects Ltd in collaboration with Moore Ruble Yudell Architects & Planners, USA

Third Integrated Teaching Building

The new teaching building comprises the construction of a multi-storey building up to five storeys with a total of 4,300 sq m in net operational floor area (NOFA) or 7,800 sq m in construction floor area (CFA). This Teaching Block will be located at the Station Road opposite to the Two Integrated Teaching Buildings which are also in the planning stage. It will provide teaching and learning facilities including primarily lecture halls, classrooms, laboratories, seminar rooms, breakout rooms as well as offices.

A much needed node is created on the



Two Integrated Teaching Buildings





Third Integrated Teaching Building

ground level to receive visitors and students. This could be turned into a series of vehicular free semi-covered terraces forming part of the connected open space network to integrate with the adjacent teaching buildings. The key features include:

- Creating different experiences when passing through the arrival entrance, the circulation hub and the semi-covered terraces in terms of scale, character and function, with a landmark atrium serving as a focal space to feed into the various floors.
- Segregating vehicular traffic from the pedestrian thoroughfare hence enhancing safety

The location of circulation core of lifts and stairs should not compromise flexibility. With the core located adjacent to the building parameter the internal space is freed up for greater flexibility in planning especially for coping with future changes.



Run Run Shaw Creative Media Centre

City University of Hong Kong

The newly completed Run Run Shaw Creative Media Centre is one of several major developments on the CityU campus. It will be the permanent home of the School of Creative Media and will also house the Department of Computer Science, Department of Media and Communication and the Centre for Applied Computing and Interactive Media.

Located on Cornwall Street at the

northern boundary of the CityU campus, the nine-storey centre was designed by the internationally acclaimed architect Mr Daniel Libeskind and is destined to become an international landmark. It will provide a stimulating environment and a meeting point for creative media professionals from around the world and for student-staff interactions, interdisciplinary collaborations and synergies with industry.

The University of Hong Kong Centennial Campus

In 2005, the University of Hong Kong invited four architectural consortia, each consisting of a local architectural firm and an international partner with global experience of innovative campus development, to present proposals for the design concept of the new Centennial Campus.

This ideas generation process was intended to stimulate discussion and enable consideration of innovative approaches to meeting the University's needs over the next 10-15 years. Upon the unveiling of the four design models, a series of roving exhibitions and public briefings and consultation meetings were held both within and outside the University.

Members of the public clearly indicated that consciousness of environmental, ecological, sustainability and heritage issues, efficient use of space, effective integration and cost-effectiveness were most important in the planning and designing of the Centennial Campus.

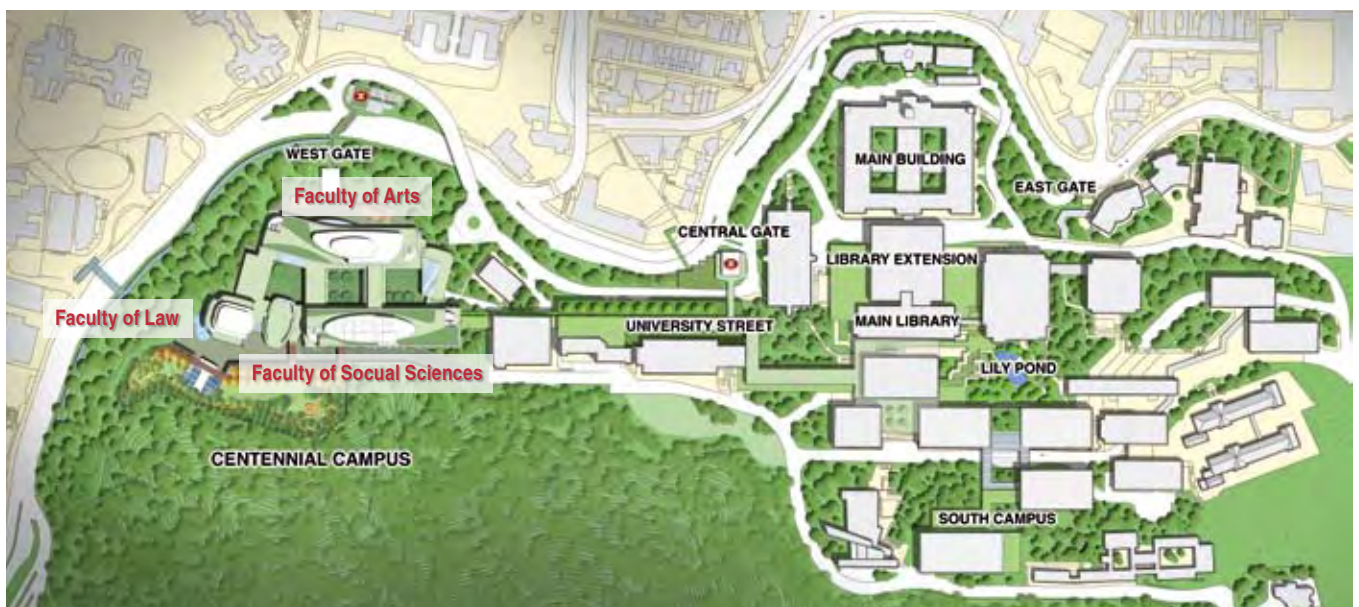
After careful consideration of all submissions and views, the University decided that the master plan proposal from Wong & Ouyang / Sasaki Associates, Inc. offered the best fit with its strategic planning principles.

- Designed to create a campus with a sense of place that expresses HKU's mission and strategic principles



- Builds on the heritage of the campus buildings and landscape
- Renders the campus more understandable and easier to navigate
- Establishes stronger linkages with the community
- Provides the setting for a vibrant learning community
- Supports sustainable principles

(For more coverage on the Centennial Campus, please refer to page 29 of this issue)



Design, supply & installation of external facade work for **VTC, CUHK & CITY U**

City University of Hong Kong –
The Run Run Shaw Creative Media Centre



Chinese University of Hong Kong –
Cheng Yu Tung Building



Hong Kong Design Institute & Re-provisioning of
The H.K. Institute of VTC LWL Campus



LIXIL

Link to Good Living

LIXIL Corporation – Hong Kong Branch
株式会社 LIXIL

(Formerly known as "Tostem Corporation Hong Kong Branch")

Unit C, 16/F., 169 Electric Road, North Point, Hong Kong.

Tel: (852) 2577 6368 Fax: (852) 2577 3207 E-mail: sales@tostem.com.hk

TOSTEM

Rasonic 樂信牌

噴射式乾手機



RBD-JJ70A

智能噴射式兩面出風，乾手速度特快

全新樂信牌乾手機，風力強勁，特有噴射式兩面出風，乾手速度更快。配備微電腦智能控制及紅外線感應開關，使用時不需接觸任何按鈕，潔淨衛生。



手伸入乾手槽，液晶顯示屏點亮



屏幕顯示噴射式出風

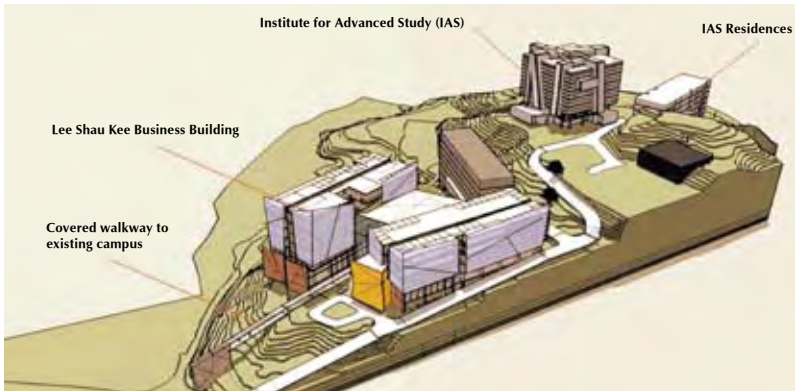
18

預設18秒乾手時間，節省能源



Lee Shau Kee Business Building

Hong Kong University of Science & Technology



Lee Shau Kee Campus

Campus Development Projects

(On campus from 2006 – 2013)

- Enterprise Center
- Lee Shau Kee Campus
 - Lee Shau Kee Business Building
 - Institute for Advanced Study (IAS)
 - IAS Residences
- Extension to the Existing Academic Building
- New Laboratory Building
- Consequential Works – New and better use for existing space
- New Students Residences – Halls VII, VIII and IX



Institute for Advanced Study

Lee Shau Kee Campus

Lee Shau Kee Business Building	12,450 sq m
Institute for Advanced Study (IAS)	4,600 sq m
IAS Residences	30 apartments
Completion	2011

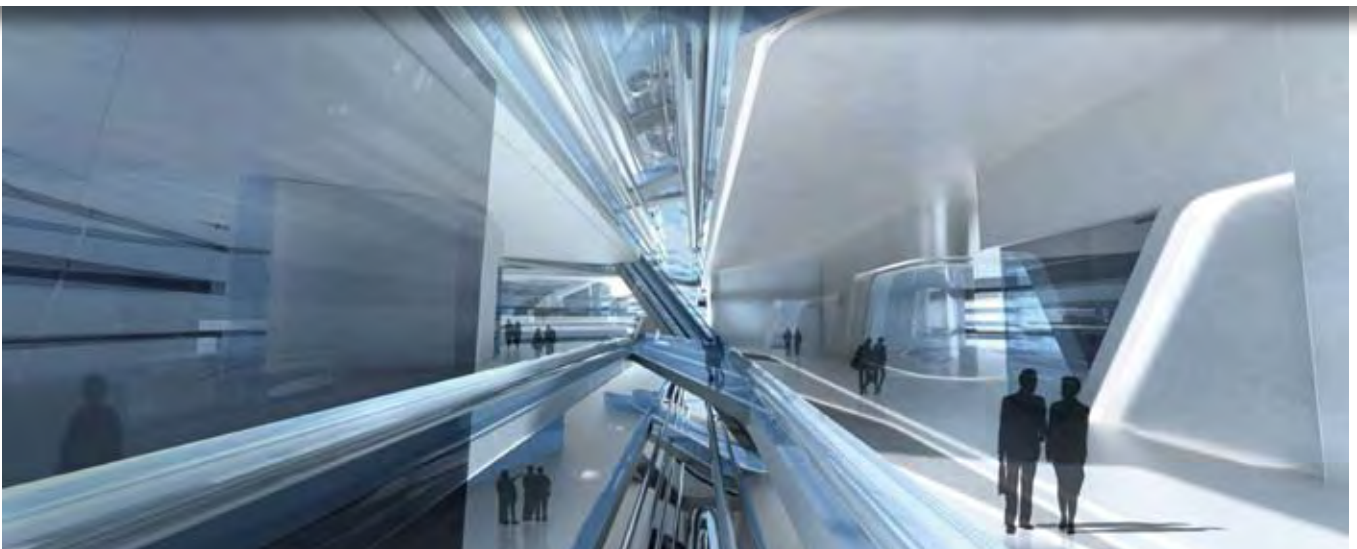


The Hong Kong Polytechnic University

Innovation Tower

Zaha Hadid's designs dissolved the classic typology of tower and podium to create a seamlessly fluid new structure – establishing a vision for future achievements and referencing the university's rich tradition. Conceptually, the university's many different programs provided a guiding principle – 'collateral flexibility' – governing the tower's internal logic.

Architect: Zaha Hadid Architects
 GFA: 15,000 sq m
 Building height: 76 meters
 Completion: 2011

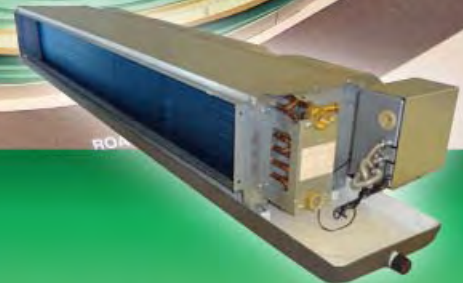




Integrated Air-Handling Unit
DC Fan Coil Unit



HKU Centennial Campus



Integrated AHU features:

- Integrated with valve, strainer, frequency inverter, control panel and various sensor
- Labor & time saving during installation
- Installation & maintenance space saving
- Reduce system installation time and cost

DC Fan Coil Unit features:

- Save 50% input power
- Brushless design, no carbon powder emission and quiet operation
- Variable fan speed control
- Maintain constant room temperature
- PI fan speed control to meet required temperature set point



偉基空調有限公司 WELCOME AIR-TECH LTD.

Unit B300, 3/FI., Block B, Sea View Estate, No. 2-8 Watson Road, North Point, Hong Kong.

Tel: (852) 2806 8316

Fax: (852) 2806 2426

E-mail: sales@saiver-welaire.com.hk

Website: www.saiver-welaire.com.hk

Hydrotek®

EXPERT IN SENSOR

美國知名大品牌 品質超群 榮獲香港水務署及多國認證



Nylon Coated Safety Grab Bar



Auto Soap Dispenser



鴻昌行國際有限公司
Hung Cheong Hong International Ltd.

香港沙田火炭坳背灣街38號華衛工貿中心9樓9座
Flat 9, 9/F., Wah Wai Centre, 38 Au Pui Wan Street, Fo Tan, Shatin, Hong Kong
Tel: (852) 2698 1012 Fax: (852) 2698 1098 E-mail: hchhk@netvigator.com

衛浴潔具 LABETA®



10/F, Dah Sing Financial Centre,
108 Gloucester Road,
Wanchai, HK.

T : 2529 3968 F : 2527 0299

W : www.skkhk.com.hk

E : enquiries@skkhk.com.hk



Lingnan University

*Lee Shau Kee Building
(The Chinese University of HK)*



*Ricci Hall
(HK University)*

*Faculty of Arts Building
(HK Baptist University)*



PAINT FOR FUTURE PILLARS

University Of HK Knowles Building
(HK University)



Fok Ying Tung Remote Sensing Science Building
(The Chinese University of HK)



Chan Chun Ha Hall
(The Chinese University of HK)



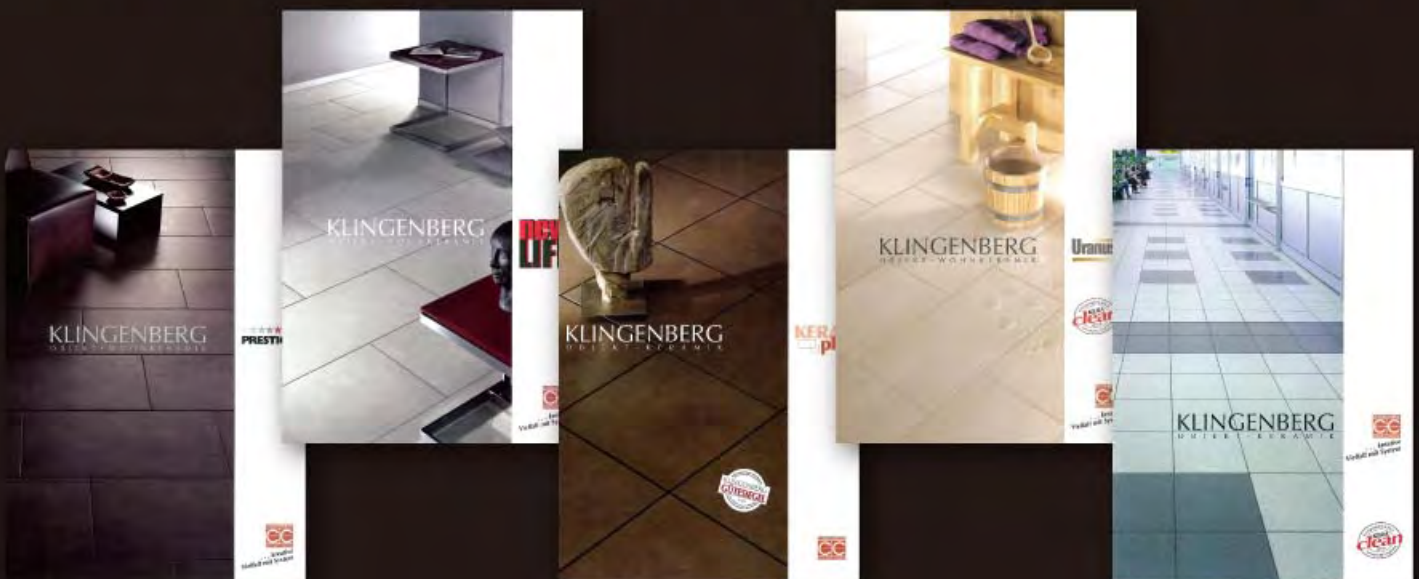
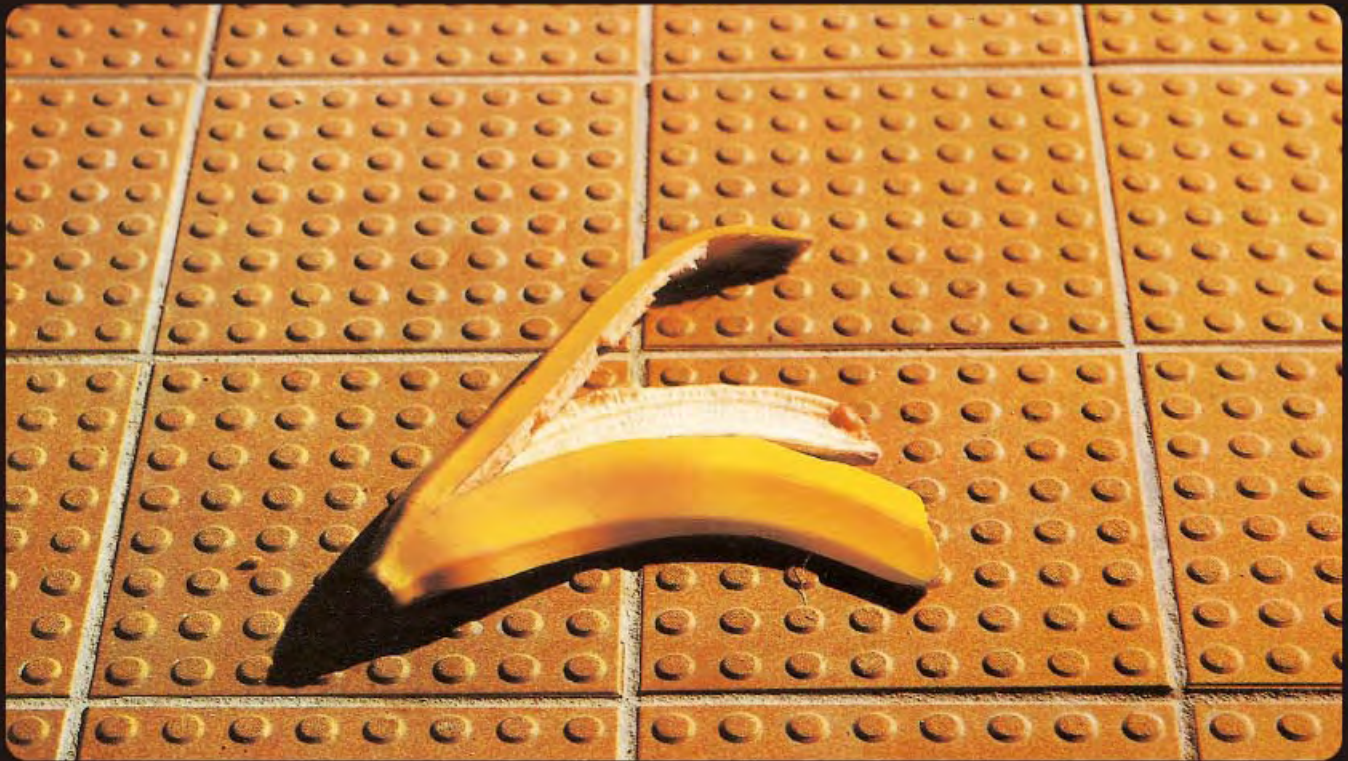
R.C. Lee & Lee Hysan Hall
(HK University)



KLINGENBERG

Tiles from Germany

TECHNICA® — UNGLAZED VITRIFIED CERAMIC FLOOR TILES
NO MORE SLIPPERY FLOORS



WWW.BUONAIDEA.COM.HK

美意建材(國際)有限公司 Buona Idea Building Materials (Int'l) Limited

香港九龍觀塘開源道55號開聯工業大廈B座606室

Room 606, Block B, Hoi Luen Ind. Centre, 55 Hoi Yuen Road, Kwun Tong, Kowloon, Hong Kong SAR

電話 Tel: (852) 2543 4243 傳真 Fax: (852) 2543 0408 電郵 E-mail: buonaid@netvigator.com

Twyford bathrooms

IN A CLASS OF ITS OWN

Twyford Water Saving Solutions for Campus



Our education range has been developed through extensive research into the requirements of today's educational facilities. **Galerie flushwise**, the revolutionary **4 or 2.6 litre dual flush system**, cuts the amount of water needed for the perfect flush by up to **60%**. Tough, durable and safe, this is a range full of innovation and fresh design with the flexibility to fit any type of installation and budget.



AWARDED
THE WATERWISE MARQUE
Best design WC for water reduction.



flushwise

A member of the Jebsen Group • CONSUMER | INDUSTRIAL | BEVERAGE | LUXURY • Mainland China | Hong Kong | Macau | Taiwan
捷成集團成員 • 消費品 | 工業 | 飲料 | 奢侈品 • 中國大陸 | 香港 | 澳門 | 臺灣



Jebsen Building Products Limited 捷成建築產品有限公司

Unit 1801, 18/F, Tower 2, Grand Century Place, 193 Prince Edward Road West, Mongkok, Kowloon, Hong Kong

Tel: (852) 3180 3330 Fax: (852) 2882 5036 E-mail: jebsenbuildingproducts@jebsen.com www.jebsenbuildingproducts.com

**ESTABLISHED IN HONG KONG AND
MOVING HONG KONG FOR
OVER 30 YEARS**

ANLEV

**ANLEV ELEX ELEVATOR LTD
安力電梯有限公司**

A member of the Analogue Group of Companies

We supplied Run Run Shaw Creative Media Centre of City University of Hong Kong with:

- 4 units of 1600kg machine-room-less passenger elevator
- 2 units of 750kg machine-room-less fireman's elevator
- 2 units of 400kg vertical lifting platform
- 1 unit of 3000kg heavy duty freight elevator



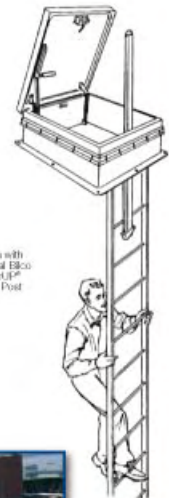
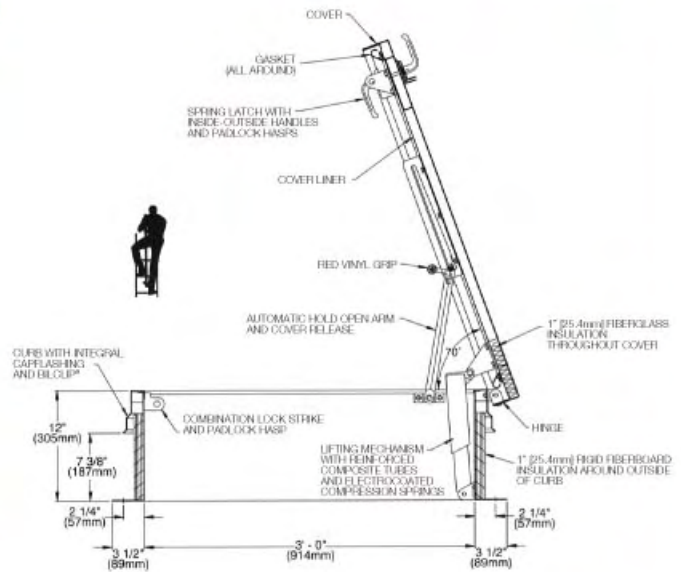
ANLEV, a member of the Analogue Group of Companies, specialises in the manufacture, sales, installation, service, modernisation and repair of all forms of vertical / horizontal transportation systems.

ATAL
We commit. We perform. We deliver.

13/F, Island Place Tower, No. 510 King's Road, North Point, Hong Kong
Tel : (852) 2561 8278 Fax : (852) 2565 7638
Email : info@anlev.com.hk Website : www.anlev.com.hk



Bilco Roof Hatch



Description:

The easy one-hand operation to the fully open or closed position provides the user the security of having one hand firmly on the ladder at all times. Available in galvanized steel, aluminum, or stainless steel construction.

Specifications:

Material

Steel: Cover and frame are 14 gauge (1.9mm) G-90 paint bond galvanized steel

Cover

Breakformed, hollow-metal design with 1" (25.4mm) concealed fiberglass insulation, 3" (76mm) beaded, overlapping flange, fully welded at corners, and internally reinforced for 40 psf (195 kg/m²) live load

Curb

12" (305mm) in height with integral capflashing, 1" (25.4mm) fiberboard insulation, fully welded at corners, and 3-1/2" (89mm) mounting flange with 7/16" holes (11mm) provided for securing frame to the roof deck

Gasket

Extruded EPDM rubber gasket permanently adhered to cover

Hinges

Heavy-duty pintle hinges with 3/8" (9.5mm) Type 316 stainless steel hinge pins

Latch

Slam latch with interior and exterior turn handles and padlock hasps

Lift Assistance

Compression spring operators enclosed in telescopic tubes. Automatic hold-open arm with grip handle release

Finish

Steel: Alkyd base red oxide primer

Hardware

Steel: Engineered composite compression spring tubes. Steel compression springs with electrocoated acrylic finish. All other hardware is zinc plated/chromate sealed



Project: The Hong Kong Polytechnic University 香港理工大學
Model: SS-90 Stainless Steel Roof Hatch

Hong Kong Sales Distributor

Power Creation Engineering Ltd.

展力工程有限公司

9/F, Sui On Industrial Bldg., 134 Wai Yip Street, Kwun Tong, Kln.

T 852-2304-4300 F 852-2304-4700

E alex@powercreation.com.hk

W www.powercreation.com.hk

Macau Sales Distributor

Ho Hing Eng. Co. Ltd.

豪興工程有限公司

Edif. Jardim Hoi Wan, 6 Andar, A06, Rua BAIA No. 55, Taipa, Macau

T 853-2885-7525 F 853-2884-8243

Mobile phone 853-6655-1260 E hohing@macau.ctm.net



Office Furniture System
Total Office Solution

Enquiry Hotline: 852 2915 8028

www.bif.com.hk

e-mail: edmond@bif.com.hk