



Heller Manus International in China

Sustainable-based design projects expanding across China

Heller Manus Architects (HM), a San Francisco-based firm is rapidly expanding sustainable-based design projects across China. Being well established in green leadership (First LEED Platinum ND project, First LEED Gold high-rises in the sister cities of Shanghai and San Francisco), HM's work integrates strongly in China's national and local green policy. Highlights of this work include:

- HM wins design competition for Tangshan Bay's Xiangyun Island International Cruise Terminal
- HM expands sustainable urban planning across China, from Guangzhou to Inner Mongolia
- HM lands new, significant major architectural design projects in Shanghai and Guangzhou
- Jeffrey Heller, President and leader of the firm's China work, has been recently appointed to the Green Growth Leaders Council (an international, high-level sustainability organization based in Copenhagen) in recognition of Heller Manus's sustainable work in China and the Bay Area.



Jeffrey Heller



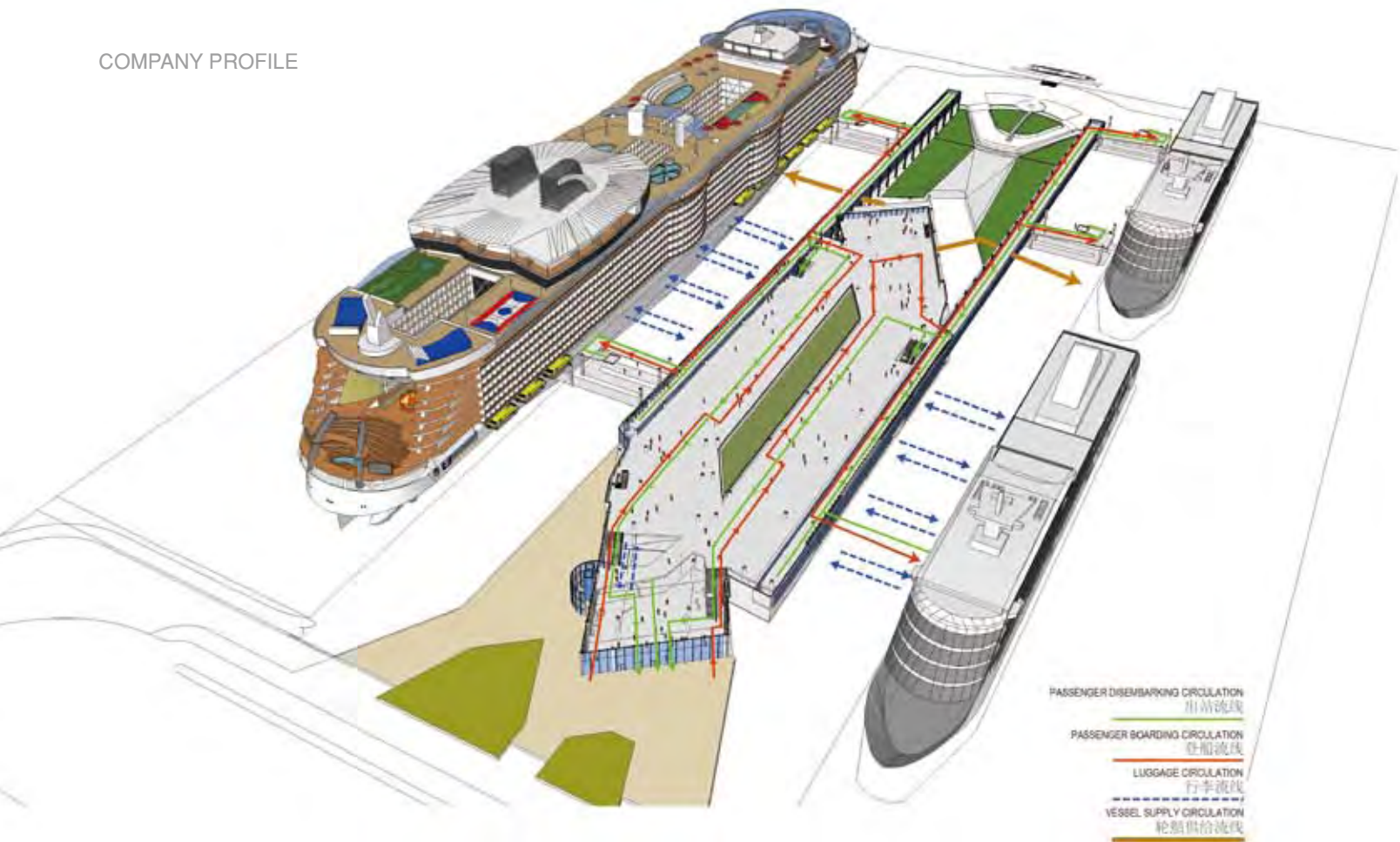
Xiangyun Island International Cruise Terminal

Design competition winner

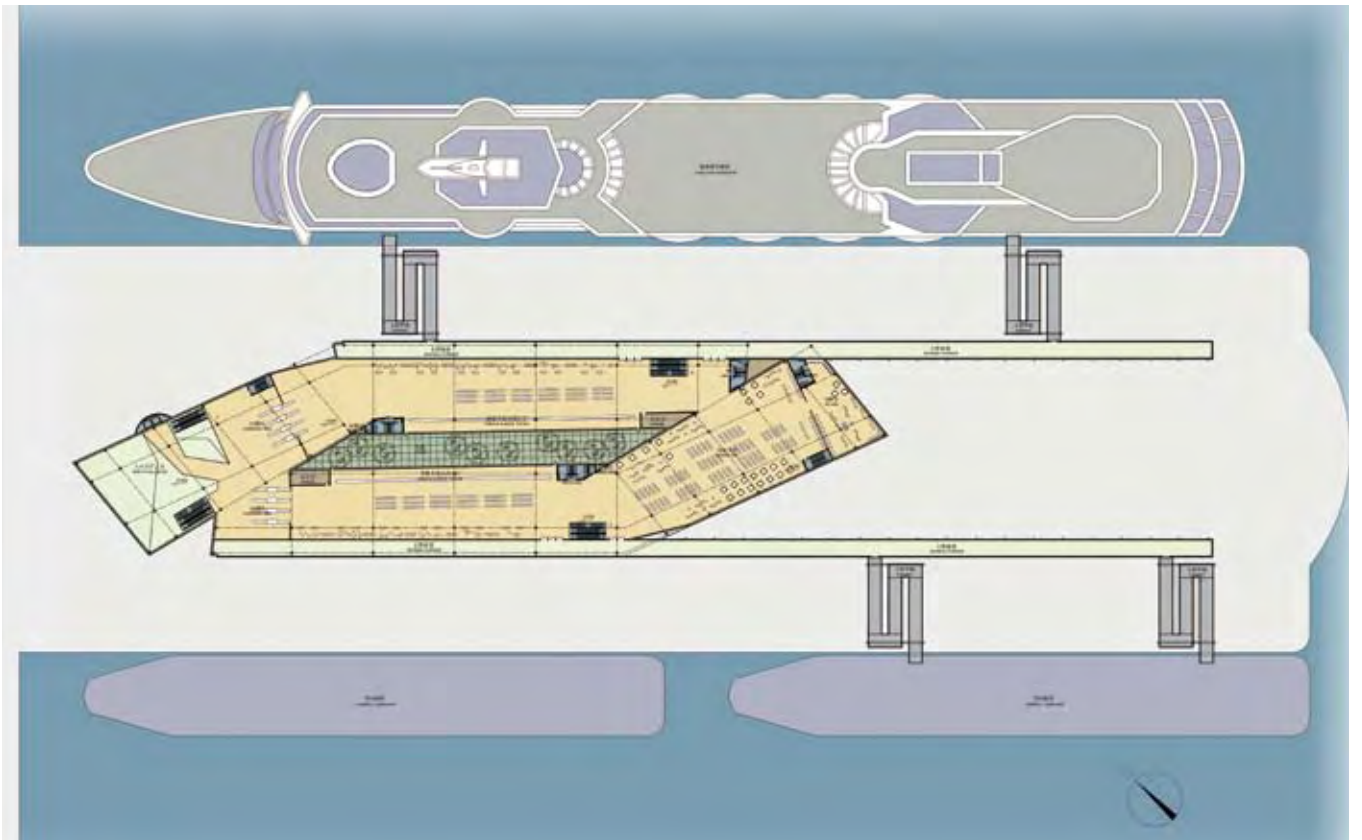


Heller Manus has won the design competition for Tangshan Bay's Xiangyun Island International Cruise Terminal, which will be the gateway for a major master planned Tourist Island located approximately 240 kilometers east of Beijing in the Yellow Sea. High-resolution renderings are now available. The building, envisioned as a symbolic gateway where the land and sea intersect, is 26,000 square meters and can accommodate up to 5,000 passengers. The pier is designed to achieve an optimal layout for international and domestic, large and small cruise ships, and features parks and a green roof as public amenities.





Site plan



2nd floor plan



1st floor plan



Sustainable urban planning From Inner Mongolia To Guangzhou





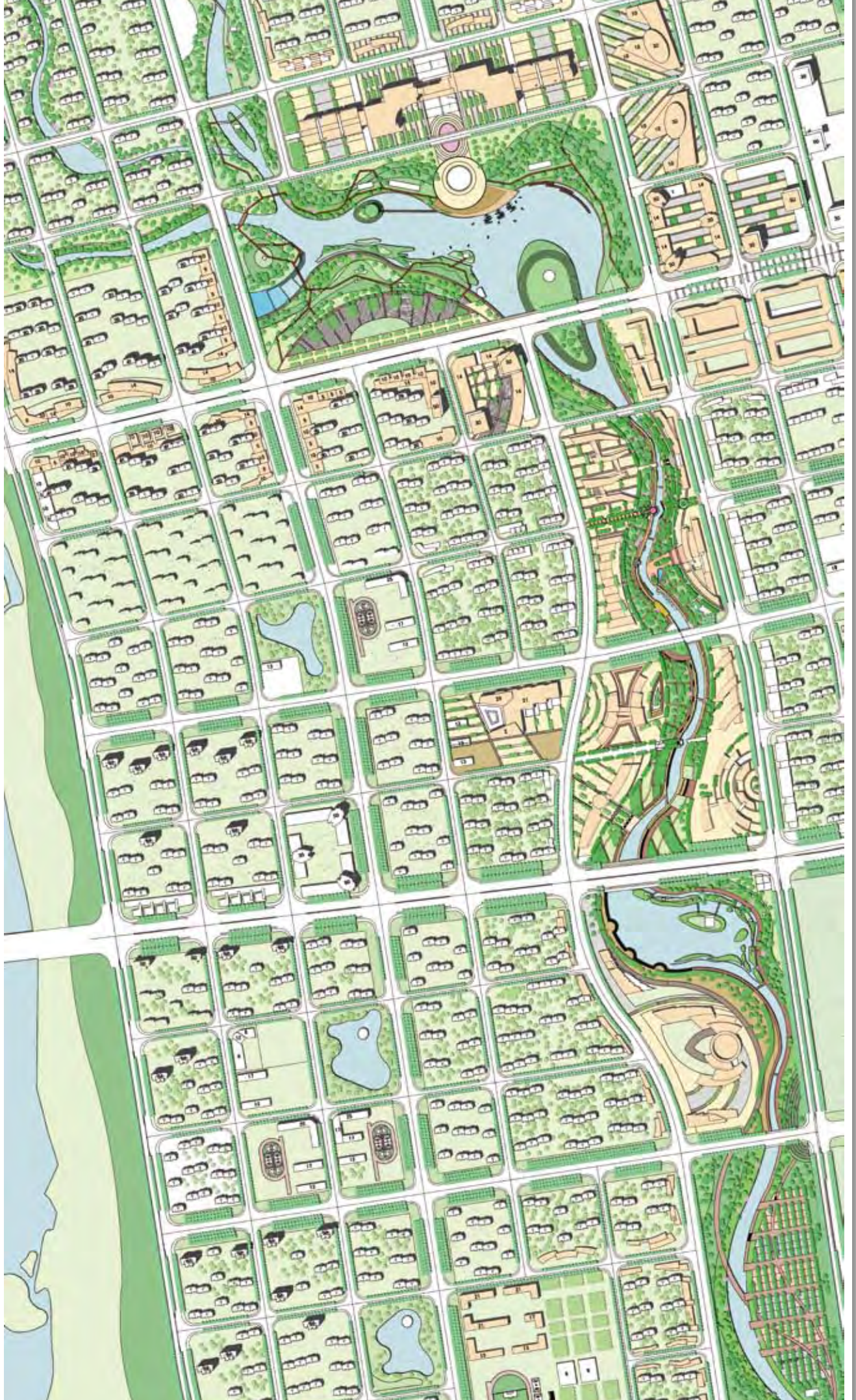
The design of the new Hedong sustainable district in Ulanhot, Inner Mongolia nears completion, and high-resolution renderings are available. The firm was awarded the design contract earlier this year. Ulanhot is an inner-Mongolian city of 280,000 people that is planning to add at least another 100,000 residents to the new Hedong District. HM's sustainable, livable Ulanhot Master Plan spans 9.4-million sq m along the Tao-er River that separates the new City development from the old City. The plan has a future build-out of over 7-million sq m of mixed use, residential, commercial, and riverfront development. The series of compact, walkable neighborhoods connect to a natural greenway/park, which serves as a connection to nature as well as an organizing element of the overall plan. With the addition of improved transportation facilities and a pedestrian-friendly park and street network, Heller Manus hopes to promote alternative means of transportation over that of vehicular use.

Beyond their master planning efforts in Ulanhot, Heller Manus has recently been awarded urban design contracts at Pazhou and Nansha in Guangzhou. The Pazhou Island project consists of energy-efficient office and research/development high- and mid-rises, residential and hotel towers, commercial retail streets, and an

exhibition and stock exchange center - all on a 760,000 sq m site. The second project in Guangzhou, Nansha New Area, is a site of 800 sq km that will be developed to revive the thousand-year old city into a sustainable commercial and technological center to serve the mainland and connect with the adjacent Hong Kong and Macau in the Pearl River Delta. In addition, Heller Manus has previously completed the sustainable/livable urban plan for Guangzhou's North and South Axes, as well as concept designs for Lijiao Village and Junyi in Guangzhou.









Eastern Harbor International Tower

New architectural design projects In Shanghai and Guangzhou

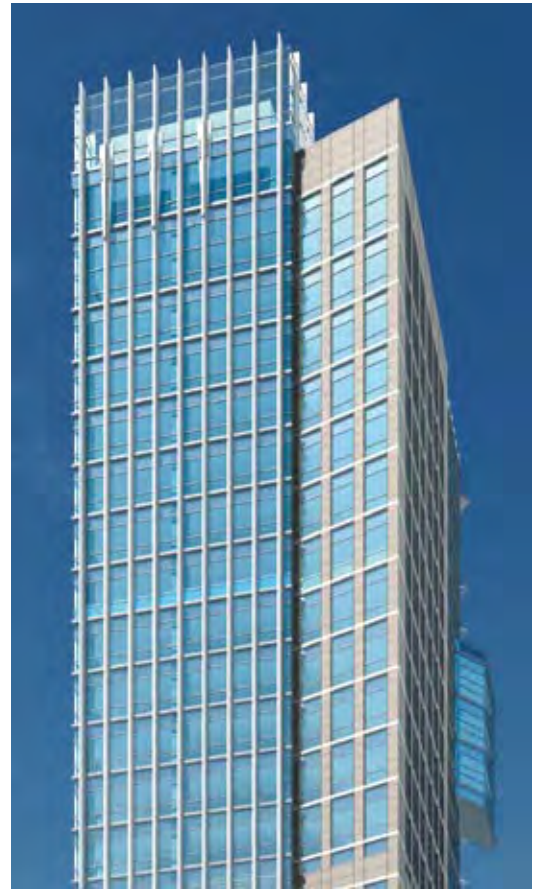


Eastern Harbor International Tower



Having won the Shanghai Yangpu Waterfront urban design competition in 2010, Heller Manus has now been awarded the architectural design contract for a project located on the Yangpu waterfront in Shanghai. The mixed-use, LEED-proposed project, primarily of residential and office uses, consists of two sites with a combined area of approximately 189,000 square meters. Also located in Shanghai, the Eastern Harbor International Tower, designed by HM, has recently opened and is the first LEED Gold high-rise in Shanghai.

Heller Manus has also been leading

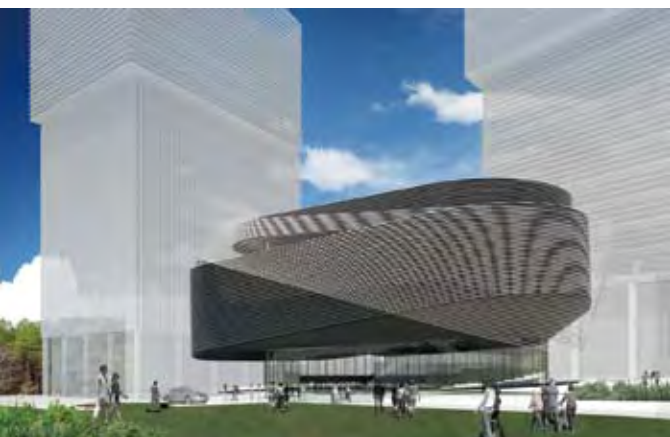




International Fashion Center



the design of the International Fashion Center in Guangzhou with headquarters for Canudilo, one of the leading high-end men's clothing and accessories firms and luxury brand retailers in China. The project will include substantial office and retail space, gallery for fashion exhibitions, and roof garden, and will pursue a LEED Platinum rating. High-resolution renderings are available. In addition, HM has recently been selected to design a commercial office development on a site area of 79,000 square meters in Guangzhou.



Jeffrey Heller, FAIA Appointed to Green Growth Council

Jeffrey Heller, FAIA, President of Heller Manus Architects, has been appointed to the Green Growth Leaders' Council, in recognition of his leadership in sustainable planning and architectural design. An international, high-level organization based in Copenhagen and dedicated to accelerating the green economy, the Council convened for the first time in the Ceremonial Hall at University of Copenhagen on April 13, 2011.

Key councilors include Lord Mayor Frank Jensen (City of Copenhagen), Jacqueline McGlade (Executive Director, European Environment Agency), Dr John Zysman (Professor, Co-Director of BRIE, University of California, Berkeley), Nobuo Tanaka (Executive Director, International Energy Agency), Philipp Rode (Executive Director, Cities Programme, London School of Economics), Ray Pinto (Senior Government Affairs Manager, Microsoft Europe), Dr Sean Randolph (President, Bay Area Council Economic Institute), Dr. Soogil Young (Chairman, Presidential Committee on Green Growth, Korea),

and Lykke Friis (Danish Minister for Climate and Energy). On October 12-13, 2011, the Council has invited hundreds of government and business leaders from around the world to meet again in Copenhagen to examine the state of the green economy and best practices in green growth.

About Heller Manus Architects

Founded over 25 years ago, Heller Manus Architects is a nationally recognized, San Francisco-based architecture and urban design firm, with offices in San Francisco and Shanghai. Their depth of experience encompasses residential, commercial, civic, rehabilitation and adaptive re-use, performance facilities, sustainability, and retail and urban design plans. Heller Manus designs cities and buildings that are appropriate contextually to the environment and the place where they are built. Since 2004, the firm's practice area has grown to include several major projects throughout China including Shanghai, Guangzhou, and the greater Beijing area. For more information, visit www.hellermanus.com.