

JIA Shanghai

A design-led boutique residence in Shanghai



Reception





Lobby bar

Lobby





Lobby Cascade



Umbrella table and teddies

Located at West Nanjing Road in Shanghai, JIA Shanghai is a designed boutique residence. With its prime, central location in a stunning 1920's building on the corner of Nanjing Road and Tai Xing Road, JIA Shanghai features 55 guestrooms and suites, some with private balconies, and a host of facilities for travellers. Two penthouse suites are located on the top floor, each appointed with luxurious facilities and with uniquely designed interconnecting functions to adjacent rooms, allowing them to form a larger suites with an area of 200 sq m. The 45 sq m guestrooms are designed as quietly theatrical, warm spaces for modern travellers.

Each room has been infused with a contemporary yet somehow familiar sense of place, acknowledging that not all travellers travel for business and not all travellers travel



Suite living room



Suite living and dining room



Penthouse living room



Penthouse bedroom



Balcony suite living

for pleasure. Timber-paneled walls give an immediate sense of modern luxury. Over-scaled custom-designed floor rugs add a stunning accent to the dark timber floors. The rooms are equipped with home-theatre entertainment systems and communication technology. The spacious bathrooms are designed with Bisazza mosaic tiles featuring specific motifs in sensual warm tones with gilt highlights. They have separate bath, shower and toilet areas with contemporary designer fittings and luxurious bath amenities.

The corridors through the 5 floors of accommodation are moody and dark, secretive with a sense of beyond and one's own room door – a glossy picture frame in a colour assigned to the floor – opens up to an airy designer-chic living area.

The lobby of the hotel is designed with an eclectic mix of bespoke furniture by interior designer, Andre Fu of Hong Kong architectural firm AFISO. Guests are welcomed into the hotel by cascade installation set in a two-storey space where



Balcony suite bedroom



Studio plus



Studio plus bathroom



Corridor



Business centre reception



Lobby breakfast



Gym room



Issimo lounge

haute heritage birdcages are suspended from the ceiling above an undulating Chinese black lacquered sculpture. Washed oak flooring and fabric wall paneling with a Chinese embroidery motif creates JIA's signature homey feel. At one end of the lobby lounge sits Fu's 'Umbrella Table' – a smoky green velvet couch attached to a black lacquer donut table and umbrella-inspired tungsten bulb stand, suitable for a quick business meeting or a casual chat. At the other end, a lobby lounge captures guests with its relaxing atmosphere – dark chocolate brown walls are carved to resemble bamboo, playful red bamboo-inspired stools, deep comfortable sofas and cushions with fabrics in rich textures and colours, add to the

inviting private-residential ambience.

JIA Shanghai also features a techno gym and business centre with two offices and a boardroom with videoconferencing facilities as well as a signature Italian restaurant.

JIA Shanghai was developed as a joint venture between Yenn Wong and Hong Kong-based Indonesian businessman John Aryananda. The rooms and suites were designed by Melbourne-based BURO Architects in association with Hecker Phelan and Guthrie Interiors. Design of JIA Shanghai's Italian restaurant, which will open in late 2008, was awarded to Hong Kong-based Darryl Goveas of Pure Creative International. The hotel was opened in August 2007.



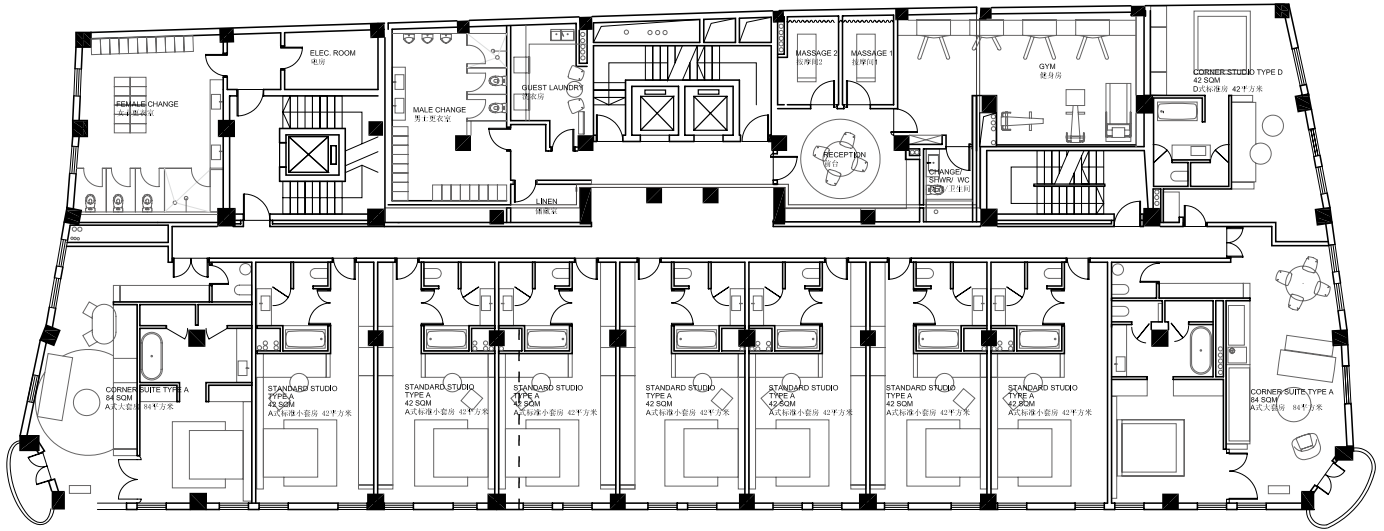
Issimo restaurant

Issimo private dining

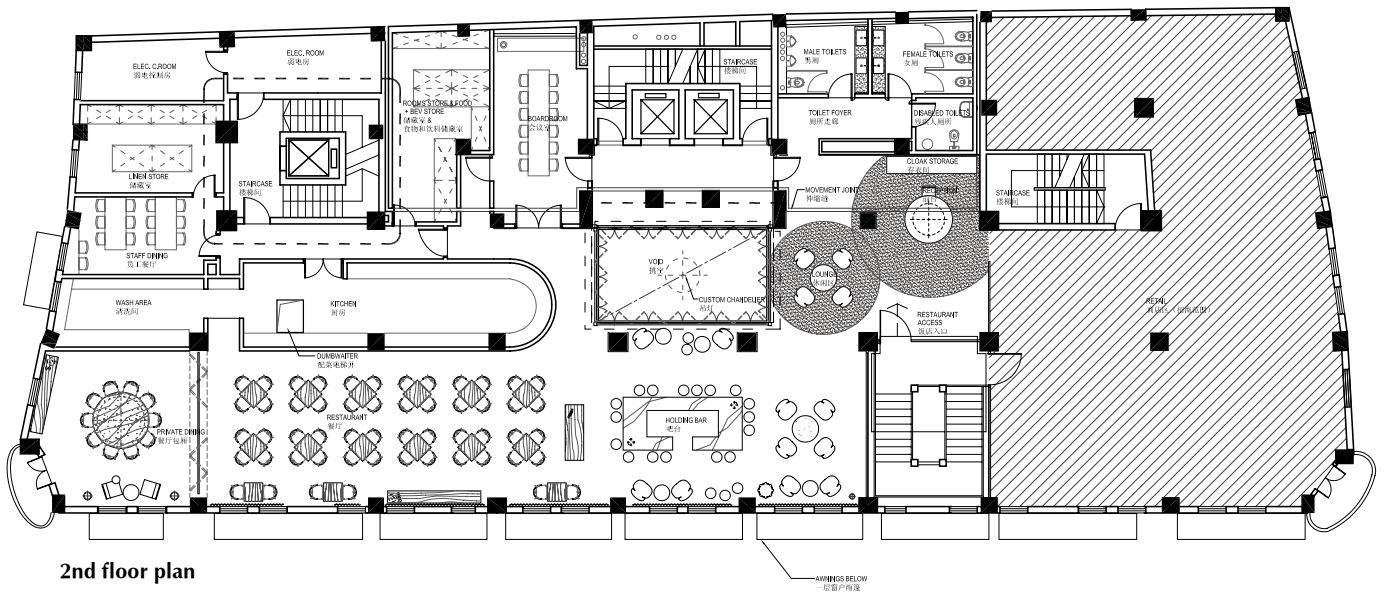


Fast Facts

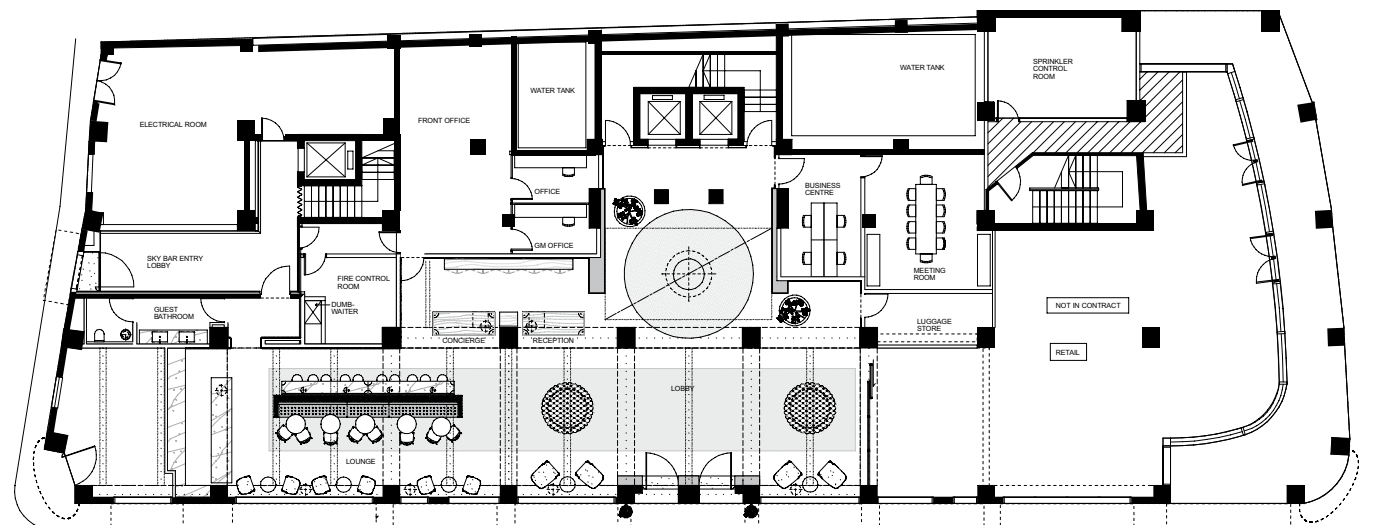
location	931 West Nanjing Road, Shanghai		
number of rooms	55 (including two Penthouses)		
number of floors	7		
hotel accommodation	Studio		35 sq m
	Studio Plus		42 sq m
	Suite		84 sq m
	Balcony Suite		84 sq m
	Penthouse		120-160 sq m
hotel facilities	Techno gym/ fitness facilities, business conference room, etc.		
opening date	August 2007		



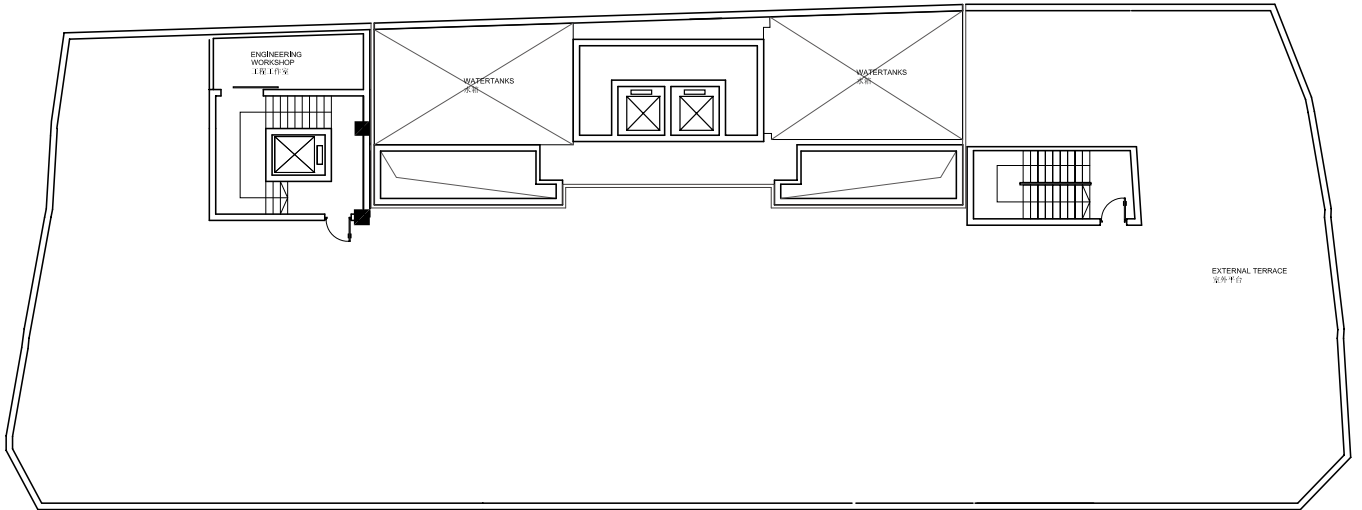
3rd floor plan



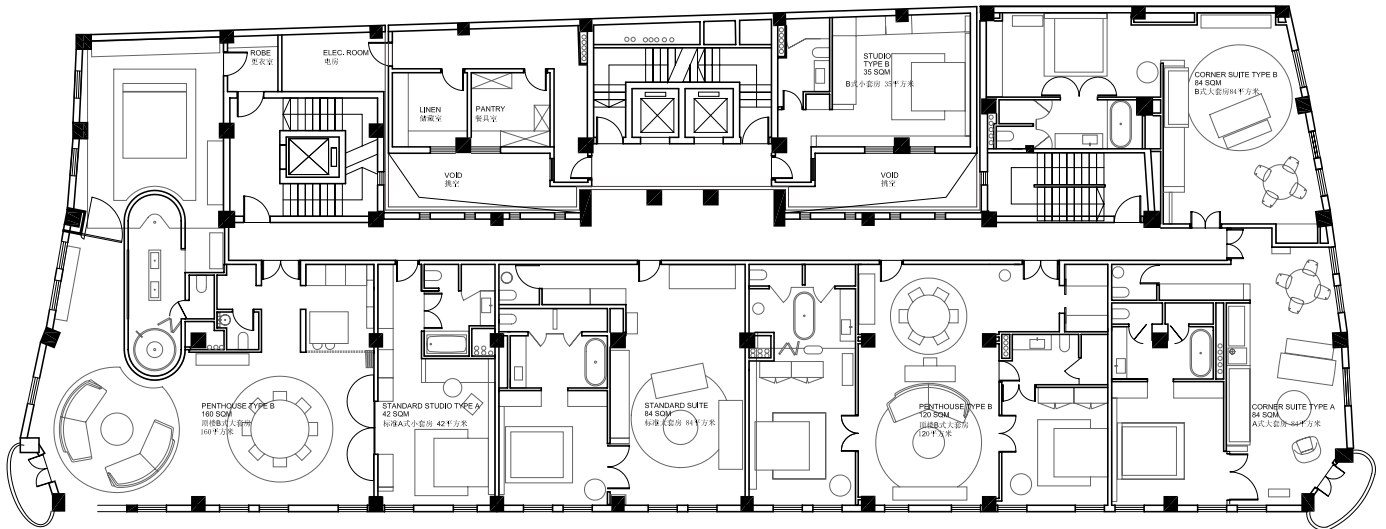
2nd floor plan



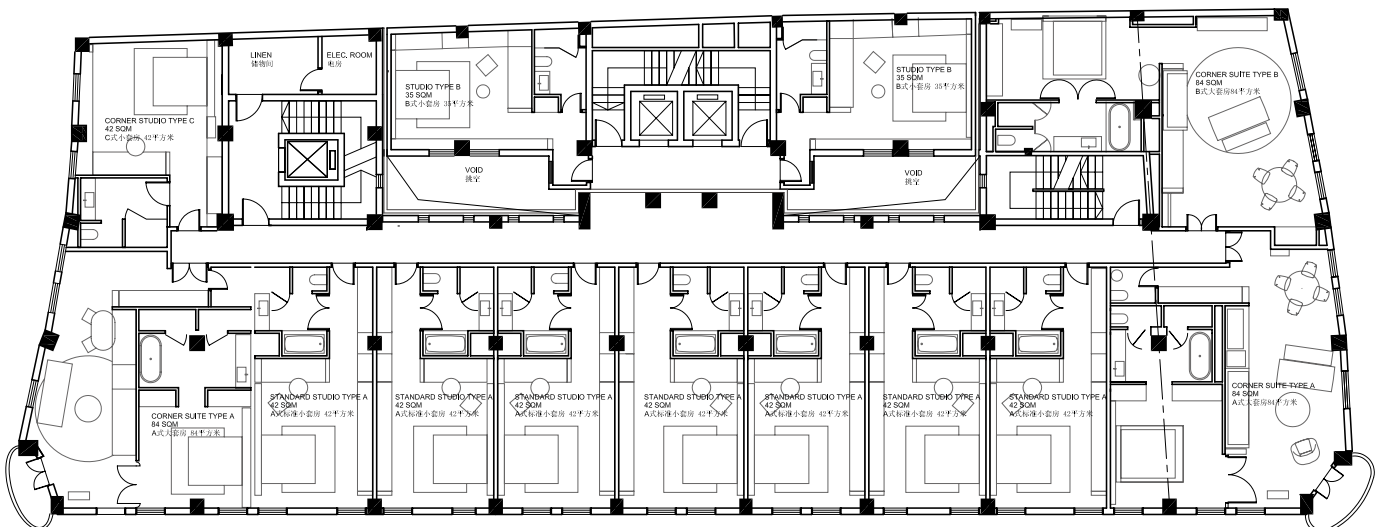
Ground floor plan



Roof floor plan



7th floor plan



4th to 6th floor plan