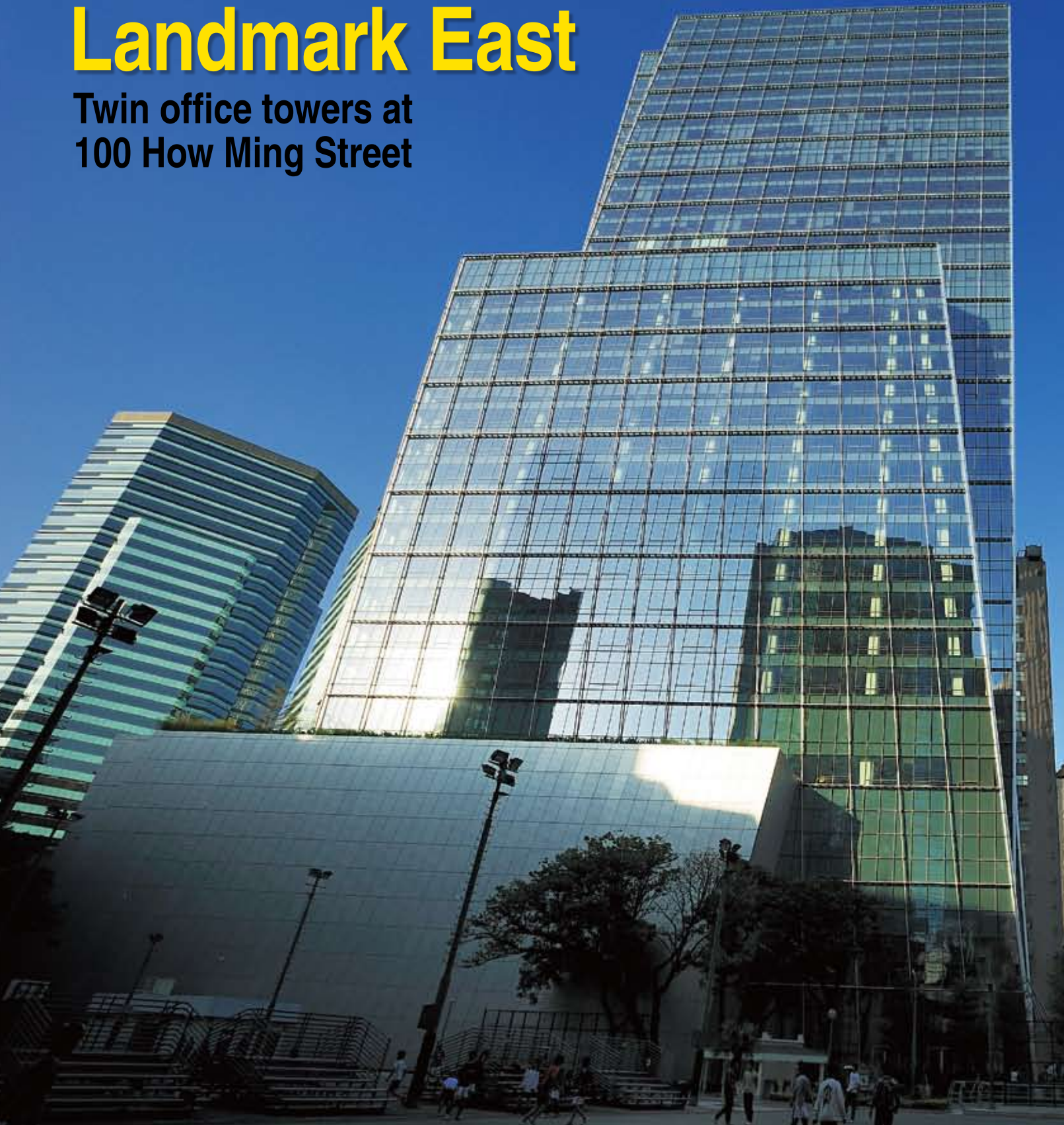
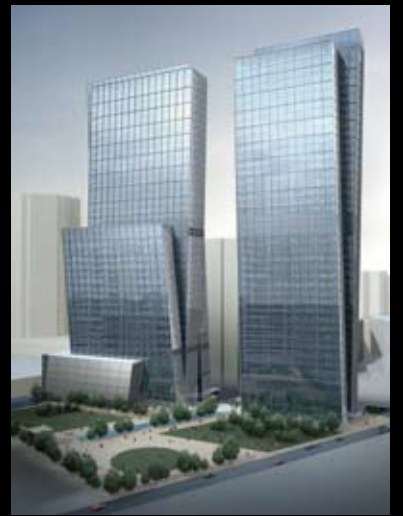
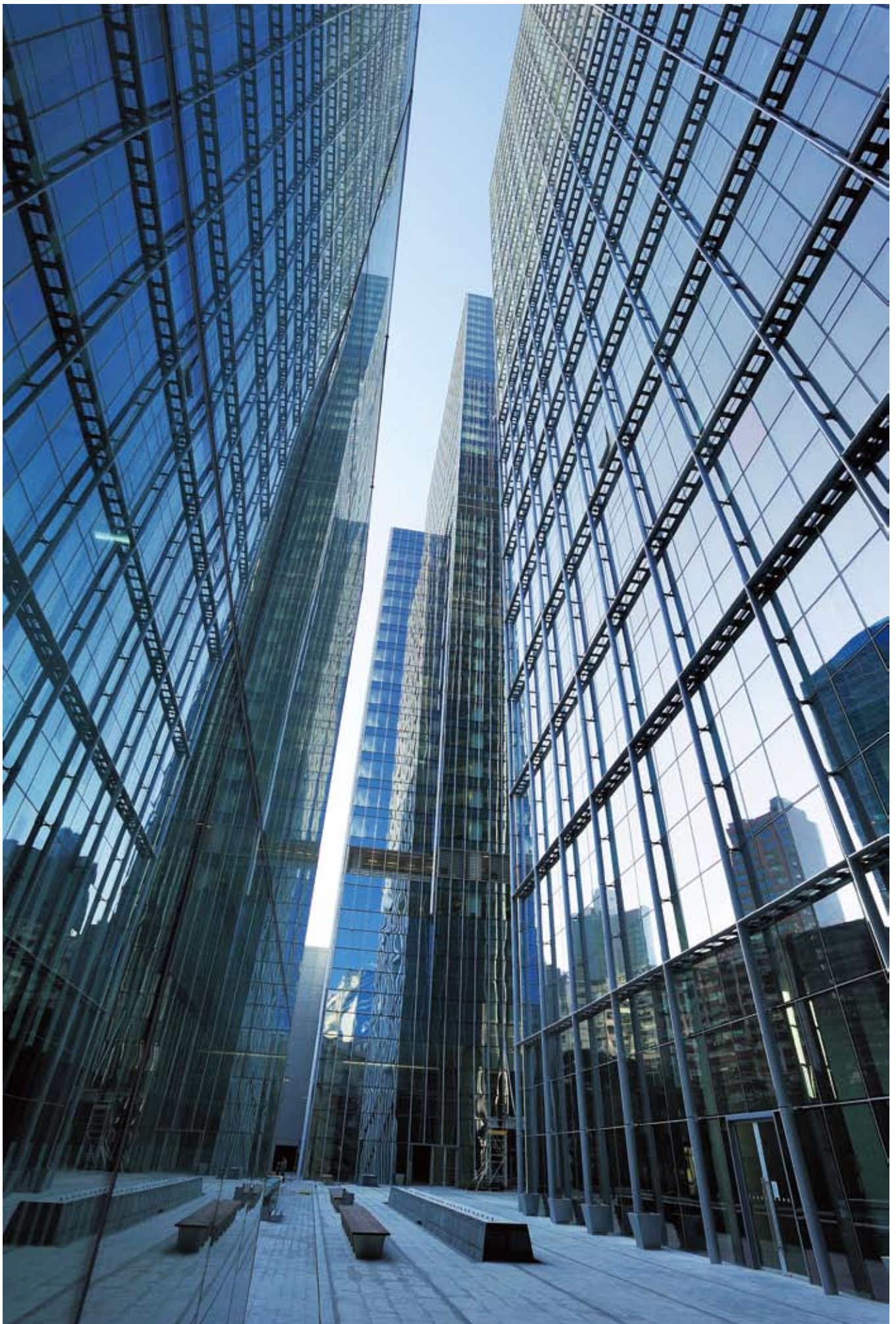


Landmark East

Twin office towers at
100 How Ming Street









Located at 100 How Ming Street in Kwun Tong, the Landmark East is a 110,000 sq m twin tower office development. The towers floor plates vary in size between the towers, providing maximum flexibility for leasing. Tower 1 comprises 36 office levels. The average floor plate size is 1,250 sq m providing a total floor area of 45,000 sq m. Tower 2 comprises 34 office levels. There are two principal floor plate sizes, 2,300 sq m in the low zone and 1,600 sq m in the mid and high zones, providing a total floor area of 68,000 sq m.

Derived from the long narrow site, the rectilinear slab towers are formed into a dynamic composition of slim, interlocking planes, slanted at varying angles to create a sense of movement and play. The cores and floor zones are arranged to maximize harbor views. The broad south elevations combined with the intersecting volumes provide valuable office space and corner units maximizing harbor exposure at the upper levels.

The building facade consists of fully unitized aluminum framed curtain wall system. The floor to ceiling glazing utilizes the latest glazing technology. Clear double glazed units incorporating performance solar coatings allow maximum light transmission whilst reducing thermal transmission through the facade.



Main entrance





Tower 1 entrance facing on
How Ming Street and
Tsun Yip Street



**Main lobby
at Tower 1
ground floor**





Tower 2 view from
How Ming Street

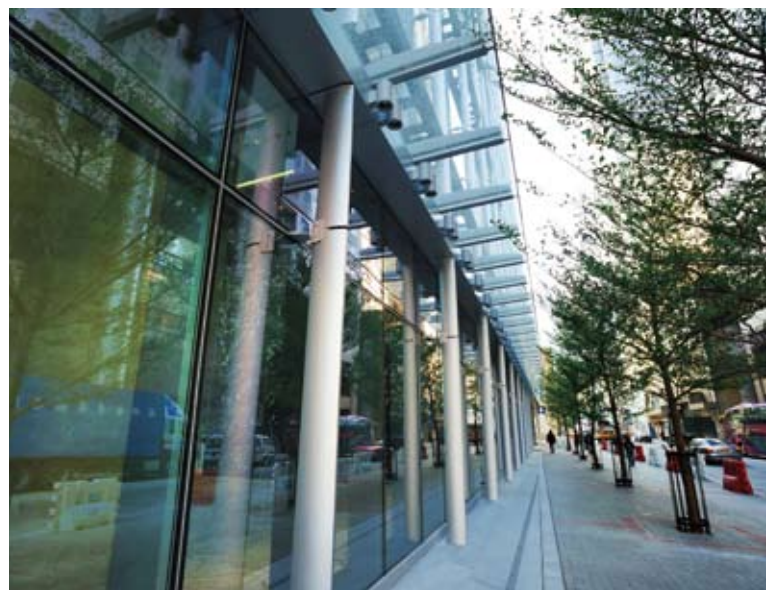




The car parking and loading has been restricted to the basement and a podium structure at the base of tower 2. This allows the remainder of the site to be opened up to form a landscape plaza at grade, a unique feature for office developments in the area.

The vertical transportation has been carefully analyzed in order to maximize lifting capacity whilst maintaining floor plate efficiencies. Each tower is divided into 3 lift zones and high-speed lifts are provided. Two car park lifts are provided in each tower providing direct access to the main lift lobbies from the car park levels.

Tower 2 view from How Ming Street





Fast Facts

location	100 How Ming Steet, Kwun Tong	
site area	8,913 sq m	
total GFA	111,764 sq m	
number of storeys	Tower 1	40
	Tower 2	43
	Basements	2
number of office floors	Tower 1	36
	Tower 2	34
ceiling heights	Tower 1	Typical: 2.9 m Special: 3.65 m
	Tower 2	Typical: 2.9 m Special: 3.3 m
commencement date	October 2005	
completion date	September 2008	
construction cost	Approx HK\$1.7 billion	



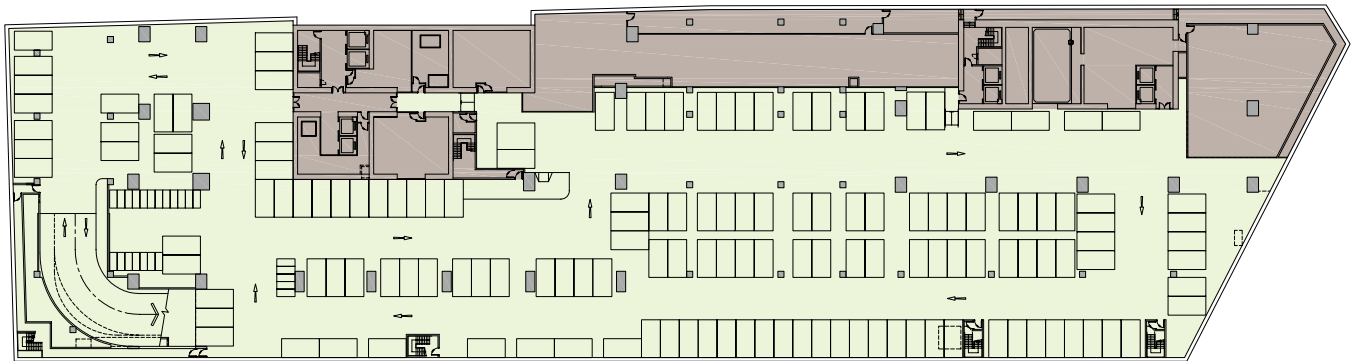


Landscape area



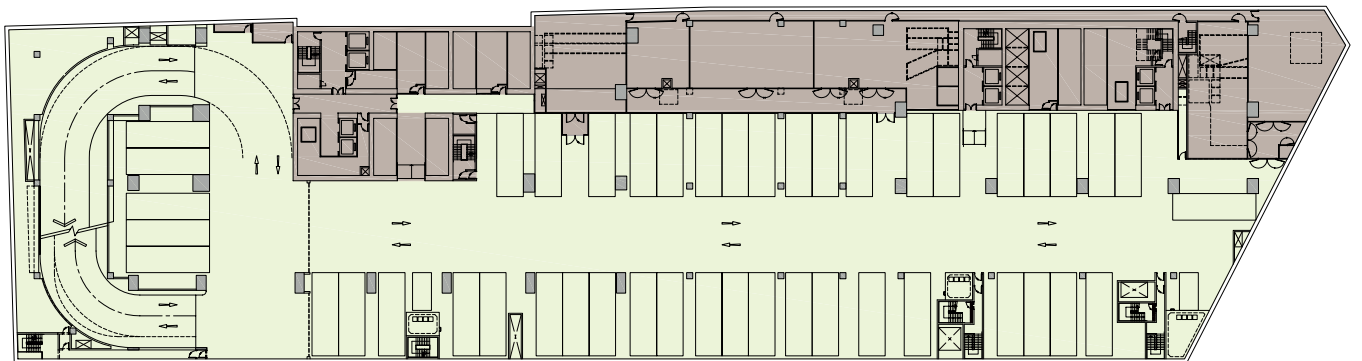


Master layout plan

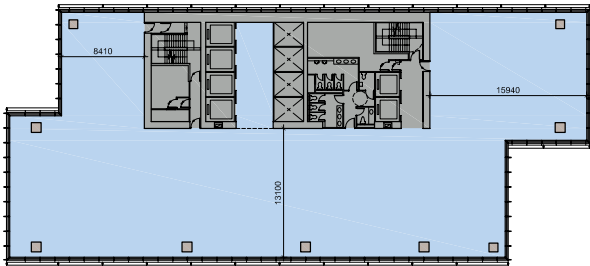


B2

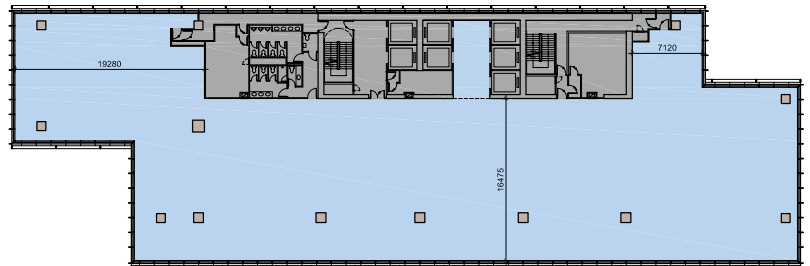
B1 & B2 floor plans



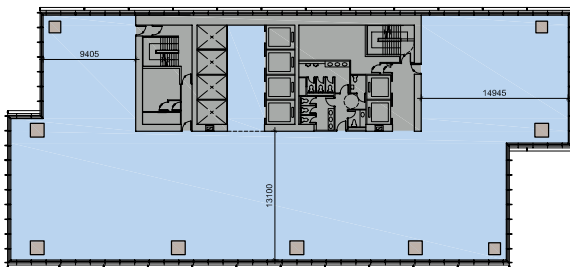
B1



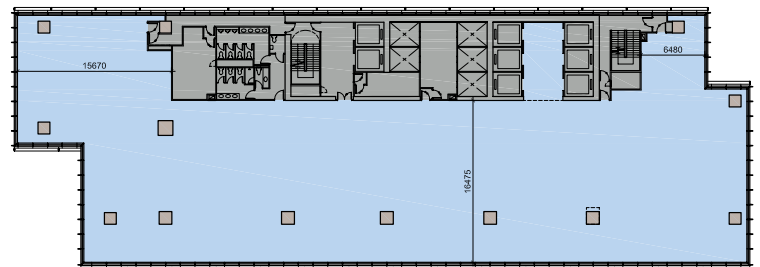
High zone 32/F - 43/F



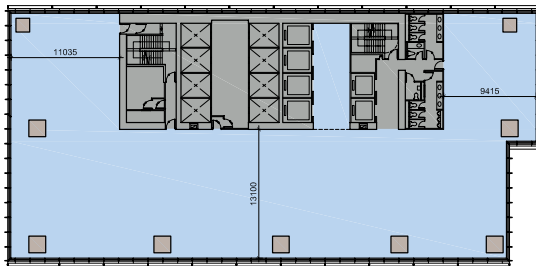
High zone 32/F - 43/F



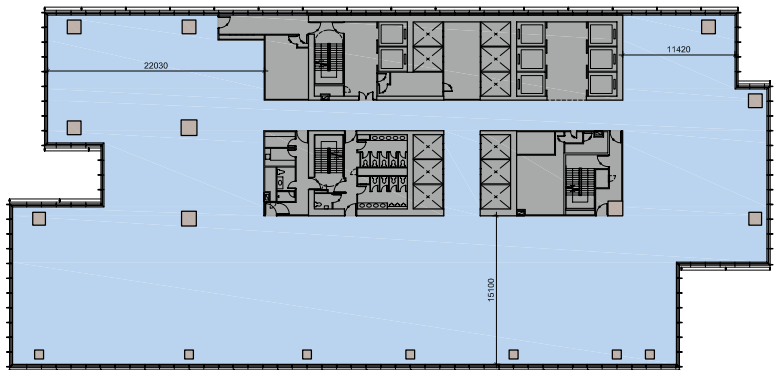
Mid zone 18/F - 31/F



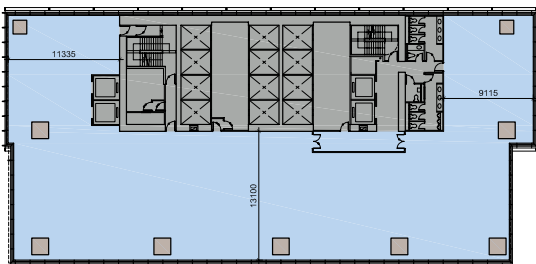
Mid zone 23/F - 31/F



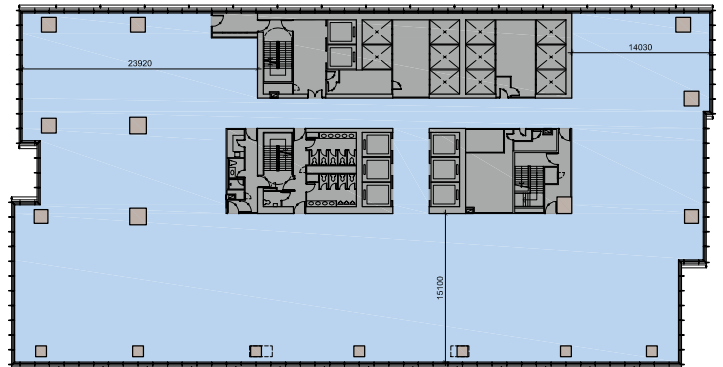
Low zone 8/F - 17/F



Mid zone 20/F - 22/F



Low zone 5/F - 7/F

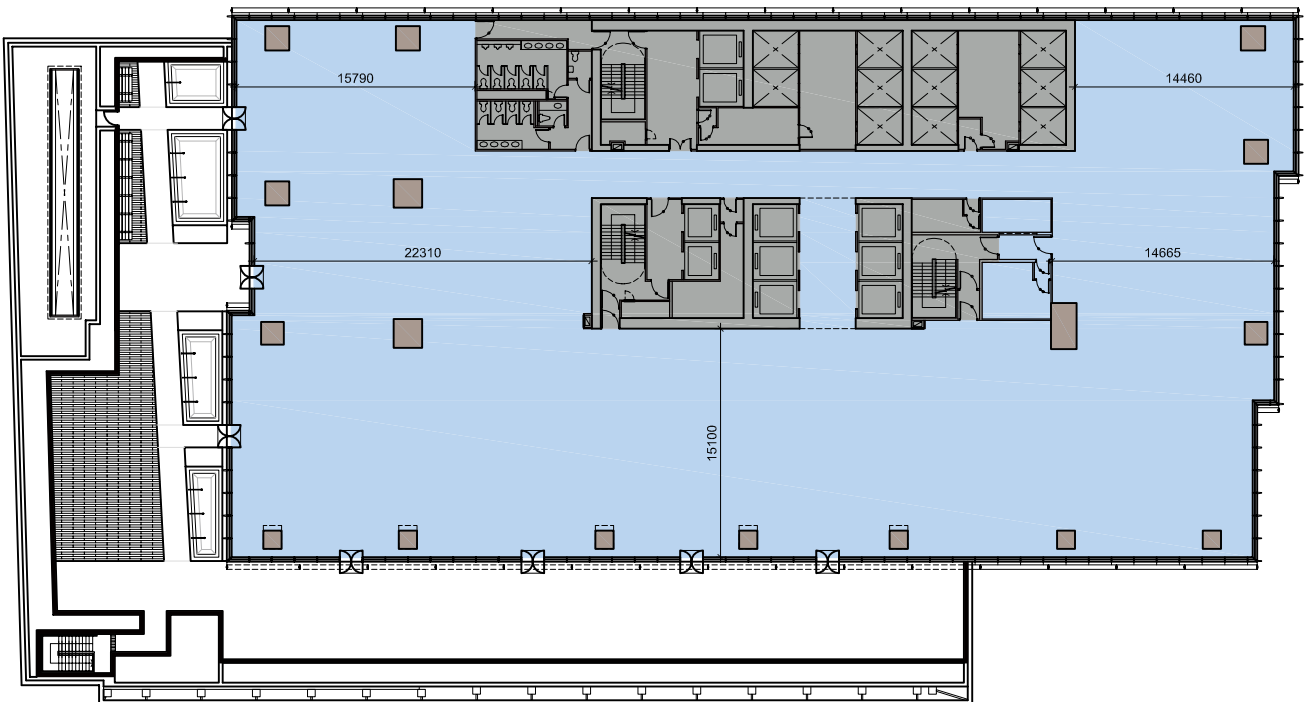


Low zone 8/F - 19/F



P3

Tower 2 P3 & 6/F floor plans



6/F

client/ owner

Winsor Properties Holdings Ltd

project manager

USI Properties Ltd

project architect

Arthur C S Kwok Architects & Associates Ltd

design architect

Arquitectonica

geotechnical and structural engineer

Mott Connell Ltd

building services engineer

Thomas Anderson & Partners (HK) Ltd

quantity surveyor

Davis Langdon & Seah Hong Kong Ltd

lighting consultant

Isometrix Lighting

landscape consultant

EDAW (Ltd)

foundation contractor

Gammon Construction Ltd

superstructure contractor

Paul Y. General Contractors Ltd

curtain wall sub-contractor

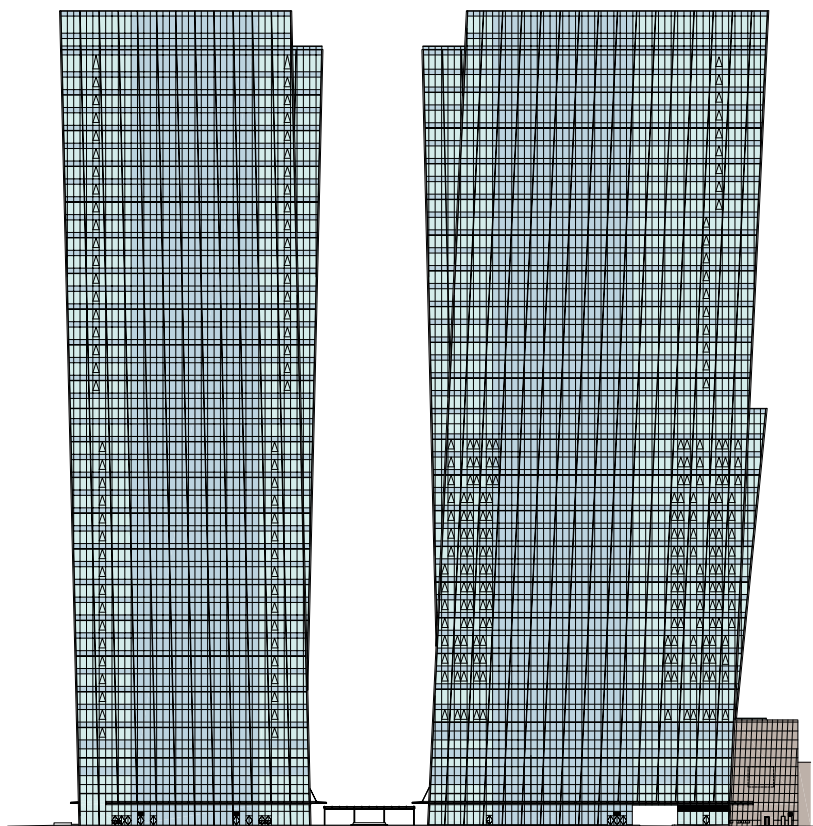
Permasteelisa Hong Kong

lift sub-contractor

Schindler Lifts

planning

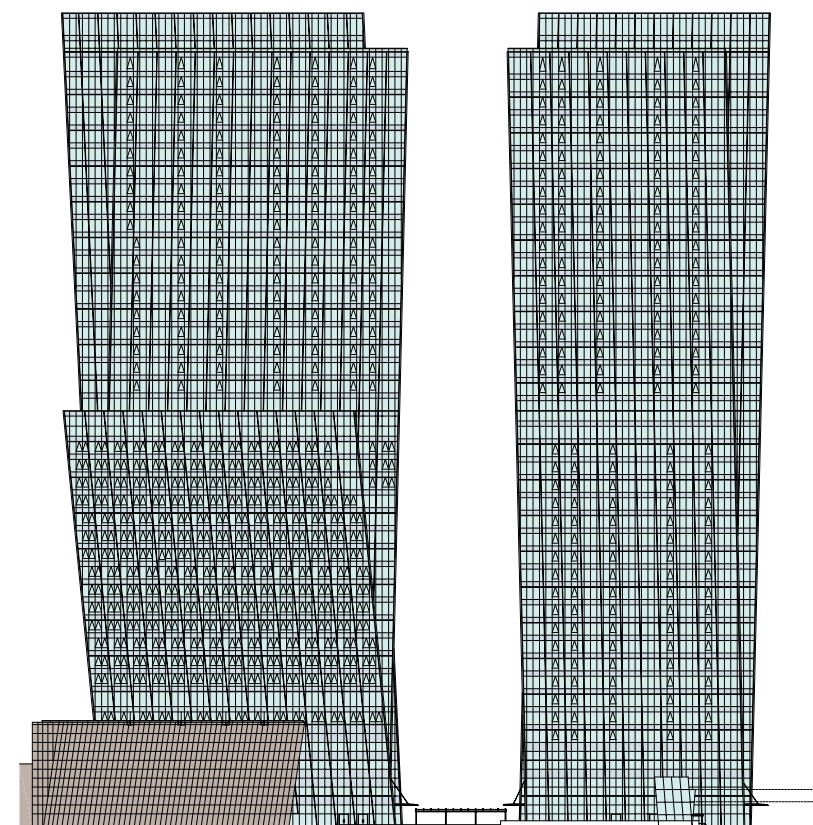
Townland Consultants



TOWER 1

North elevation

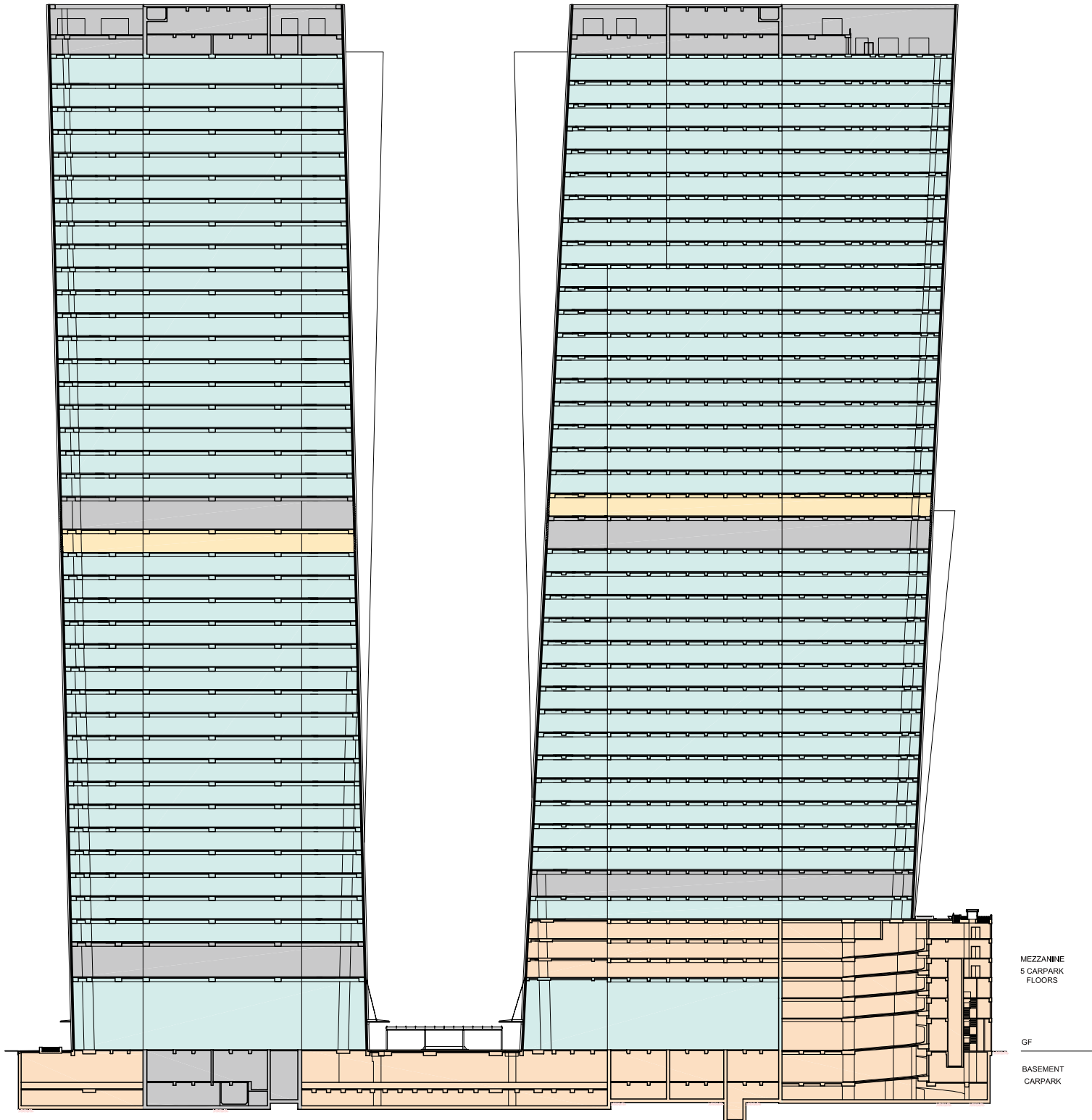
TOWER 2



TOWER 2

South elevation

TOWER 1



Section