

First published March 2007
Building Journal Hong Kong
trend@building.com.hk

128 Peak Road, The Peak, Hong Kong

The Peak Tower

Panoramic view of Victoria Harbour from
the Viewing Terrace of The Peak Tower



Located on The Peak on Hong Kong Island, The Peak Tower is one of Hong Kong's most recognizable icons and leading tourist destination. In December 2004, The Hongkong and Shanghai Hotels, Limited publicly unveiled its plans to revitalize The Peak Tower. Although the distinctive bowl-shaped structure remains, the interior has been reconfigured to significantly increase the lettable area as well as introduce lively entertainment, retail and food and beverage concepts. The Peak Tower has completed its extensive revitalization programme and re-opened in November 2006.

Viewing Terrace

It's not just The Peak Tower that has been transformed, but the view itself. The Viewing Terrace, originally on Level 5, has been relocated to the roof of The Peak Tower, giving

a much larger viewing area and spectacular 360-degree views across Hong Kong. The conversion of the rooftop of the bowl-shaped building into a huge viewing platform is one of the key highlights of the new-look Peak Tower.

One hundred feet higher than before, the Viewing Terrace will have a main viewing platform of 330 sq m and two raised decks of 150 sq m each, with a total capacity of 500 person. The facility will be available for private events including weddings.

From the architectural splendours of Central and Wanchai, viewed from the East Wing, to green Pok Fu Lam, the South China Sea and beyond as revealed from the West Wing, the magnificence of an idyllic as well as a dynamic Hong Kong is showcased as never before. An added attraction on the Viewing Terrace is the Sky Gallery which provides exhibition space for works by the city's many talented artists. As



much as The Peak Tower is a tourist attraction, it has also figured strongly as a recreational draw for local residents for many decades. As a result, it came out the idea to involve the community in its revitalization, leading to the decision to create the Sky Gallery.

New attractions

Besides the rooftop Viewing Gallery, other noteworthy features in The Peak Tower’s revitalization plans include several upscale restaurants with stunning views over Hong Kong as well as a number of innovative casual dining outlets. Retail outlets incorporated within The Peak Tower for visitor enjoyment and indulgence include the video game publisher in the US – Electronic Arts; Peak Temptations, offering memorabilia of visits to the popular destination. The Peak Market shopping arcade is a contemporary reinterpretation of traditional Hong Kong evening venues such as Ladder Street and The Ladies Market. A much-expanded Madame Tussauds, a perennial favourite, was the first tenant to open within the Tower.

State-of-the-art lighting effects illuminate The Peak Tower at night and also to be the highest elevation nighttime feature of Hong Kong’s spectacular and internationally famous skyline.

The major renovation of The Peak Tower coupled with the Government’s plans to upgrade the area in the immediate vicinity, is expected to generate substantially more interest in visiting the popular destination and to encourage visitors to stay longer.

owner
The Hongkong and Shanghai Hotels, Limited

lead and architectural consultant
Ronald Lu & Partners (HK) Ltd

civil/structural/building services/facade/fire engineering consultant
Ove Arup & Partners Hong Kong Ltd

quantity surveyor
Bridgewater & Coulton Ltd

acoustic consultant
Campbell Shillinglaw Lau Ltd

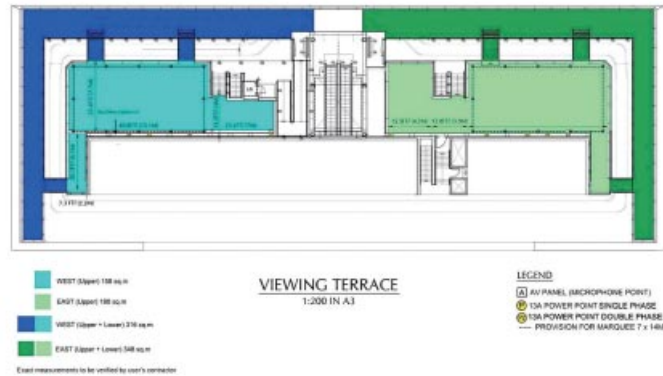
lighting and AV consultant
AWA lighting designer

signage and graphic consultant
Red Retail Limited

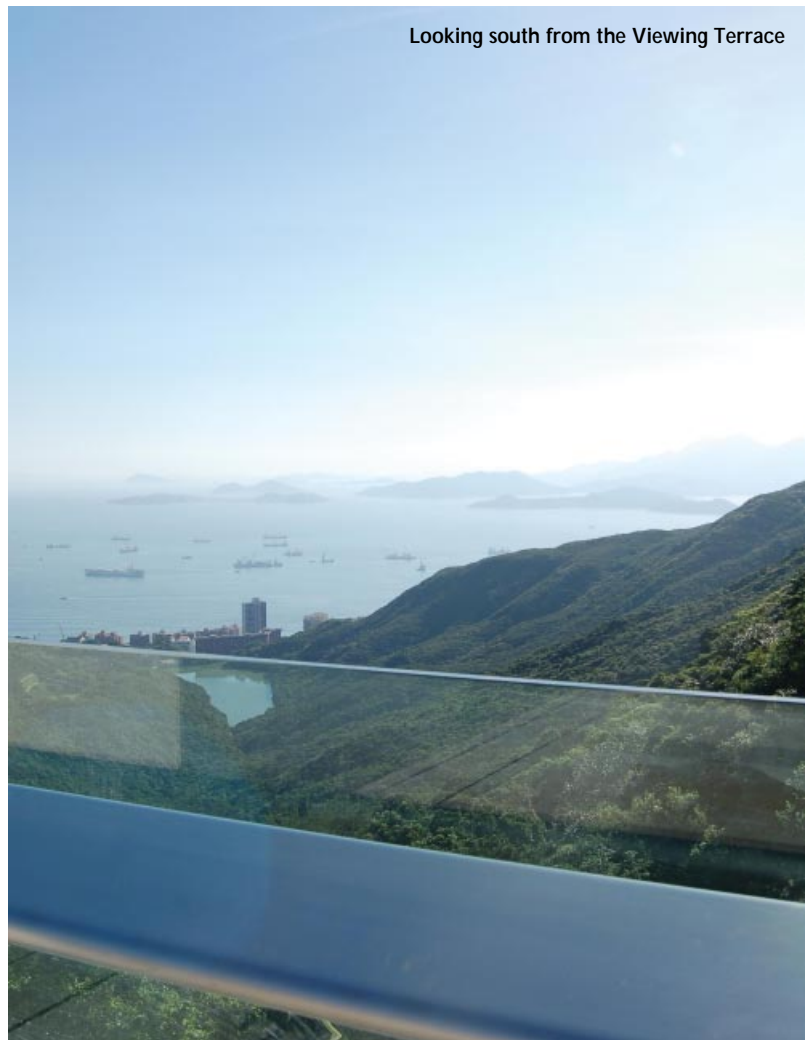
main contractor
Hip Hing Construction Co Ltd



The Peak Tower rooftop Viewing Terrace



Looking south from the Viewing Terrace





Fast Facts

total floor area	11,892 sq m
new viewing platform	686 sq m
the new signature Chinese restaurant	600 sq m
Viewing Terrace main viewing platform	330 sq m
two raised decks	150 sq m each
total capacity	500 person
revitalization date of commencement	April 2005
period date of completion/re-opening	November 2006

